



ES 2X2 ASB11 V2A (472 109)

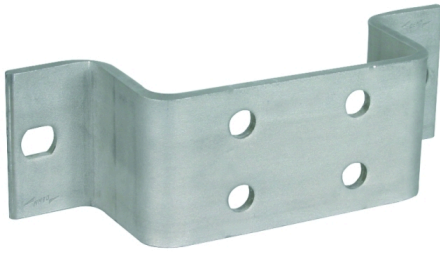
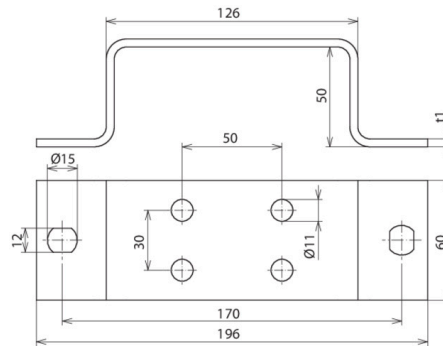


Figure without obligation



Type	ES 2X2 ASB11 V2A
Part No.	472 109
Material	StSt
Cross-section	300 mm ²
Connection bores Ø	11 mm
Dimension s (l x w x d1)	196 x 60 x 5 mm
Fixing	[2x] 12 x 15 mm
Standard	EN 62561-1
Weight	604 g
Customs tariff number (Comb. Nomenclature EU)	85389099
GTIN	4013364074477
PU	1 pc(s)

*) For exact assignment see test certificate.

We reserve the right to introduce changes in performance, configuration and technology, dimensions, weights and materials in the course of technical progress. The figures are shown without obligation.

Special designs available on request.