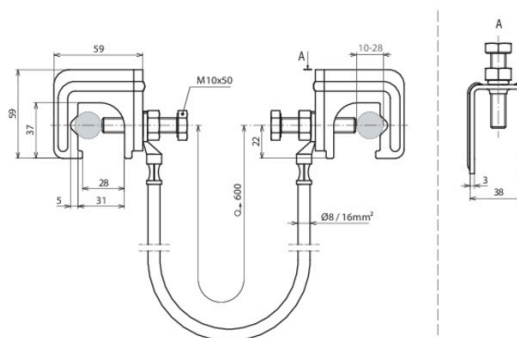


UES 16 L600 2VK RD10 28 (416 941)



Figure without obligation



Bridging device consisting of connecting cable with two connected connecting clamps.

Arrangement:

Type	UES 16 L600 2VK RD10 28
Part No.	416 941 NEW
Connecting clamp material	St/bare
Clamping range Connecting clamp	10-28 mm
Screw Connecting clamp	M10 x 50 mm
Bridging cable material	Flexible copper conductor, frost-resistant
Bridging cable cable length	600 mm
Bridging cable cable cross section	16 mm ²
Cable lug Bridging cable	M10 / Cu/galSn
Lightning current carrying capability (10/350 µs)	100 kA ^{*)}
Standard	EN 62561-1
Short-circuit current (AC 50 Hz / DC) (1 s; ≤ 300°C)	3.1 kA
Weight	497 g
Customs tariff number (Comb. Nomenclature EU)	85389099
GTIN	4013364360273
PU	25 pc(s)

Special lengths possible on request.

^{*)} For exact assignment, see test certificate.

We reserve the right to introduce changes in performance, configuration and technology, dimensions, weights and materials in the course of technical progress. The figures are shown without obligation.