

D KLP D50 BEB (419 900)

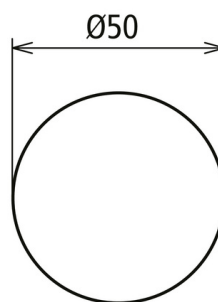
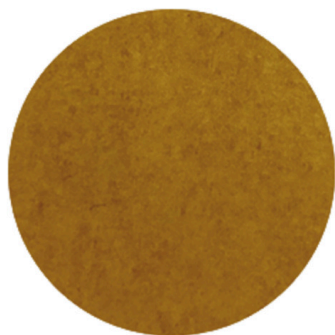


Figure without obligation

The adhesive pad is used to fix railway earthing products to the formwork by means of an adhesive connection. The adhesive pad can be stuck to the StSt connection plate of D BEB 0 and is then connected to the formwork itself.

Type	D KLP D50 BEB
Part No.	419 900 NEW
Diameter	50 mm
Weight	2 g
Customs tariff number (Comb. Nomenclature EU)	39191080
GTIN	4013364439641
PU	1 pc(s)

We reserve the right to introduce changes in performance, configuration and technology, dimensions, weights and materials in the course of technical progress. The figures are shown without obligation.