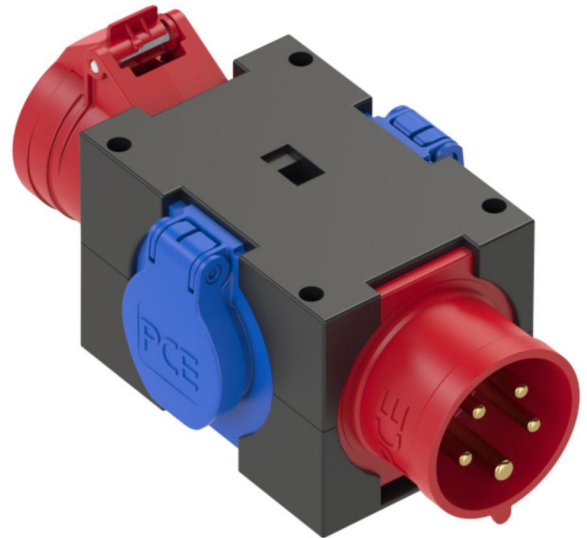


## PCE data sheet

article#	<b>9430050</b>
article description	<b>Mobilverteiler Kunststoff Baureihe ST.ANTON 16/4 2xSSDbf GS16/5 o.B. IP44</b>
description long	Mobile, insulated thermoplastic distribution box - Series St. Anton IP44 without handle entry: 1xCEE-plug 16A 5p 400V outlet: 1xCEE-sockets 16A 4p 400V unprotected outlet: 2xsockets 16A 250V IP54 belg/French unprotected distribution box is ready wired for using
GTIN (EAN)	9003399100963
country of origin	AT
customs number	85366990
net weight	0.500 kg

ETIM 7.0	EC000379
CEE socket outlet 16 A	1x16A5p400V
Number of socket outlets with protective contact	2
Protection	None
Earth leakage switch	None
Material housing	Plastic
Contact material	CuZn
Power supply/connection possibility	Built-up plug
Type of mains connection	CEE 16 A
Handling	Portable
Degree of protection (IP)	IP44
Colour	Black
Height	80 mm
Width	78 mm
Depth	115 mm



[www.manufacturer-safety.info](http://www.manufacturer-safety.info)