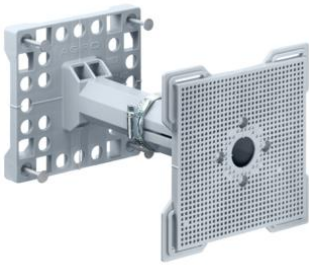


## Telescopic support for installations in concrete



### Telescopic support

- for supporting all boxes (99xx.xx without support element connection detail) on erected wooden formwork
- Fixing of the base plate by means of the four enclosed nails
- Fixing of the supported box by screwing onto the support plate
- Without extension piece, adjustable for wall thickness from 135 to 205 mm + depth of supported box. With enclosed extension piece, adjustable from 195 to 265 mm + depth of supported box.

<b>Order number:</b>	<b>9957</b>
EAN:	7611614075365
Length	110 mm
Width	110 mm
Height	150-300 mm
Number of nails	4
Dispatch	10

Locking at required degree of extension by means of supplied hose clamp

Attention: The hose clamp must be fully tightened!

The set dimension (incl. box depth) should always be at least 2 cm greater than the wall thickness