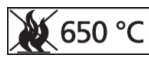
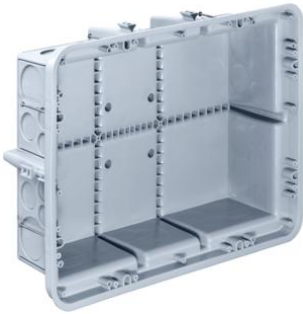


Wire-pull casings



Extra-large flush-mounted junction boxes

- for device screws \varnothing 3.5 mm
- max. tightening torque 0.8 Nm

Order number:	9917
EAN:	7611614261768
Length	400 mm
Width	300 mm
Depth	120 mm
Tube entries up to M25	16
Tube entries up to M32	8
Tube entries up to M40	2
Tube entries up to M50	8
Extensive pull-out apertures	10
Intake for Prefix	6
Number of nails	8
Dispatch	10

KAISER wire-pull casings ensure expert cable routing through conduit networks. According to DIN 18015-1, conduit lengths of more than 15 m and with more than two bends require wire-pull casings that allow cables to be added or retrofitted at any time. Wire-pull casings provide multiple conduit entry options and maximum free space to ensure a continuous cable network, including with subsequent changes to the electrical installation.

- Quick and secure installation using pre-inserted nails
- Clean stripping where exposed concrete is required
- High dimensional stability, no internal support required
- Multiple conduit entry options
- Stackable

