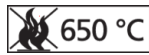
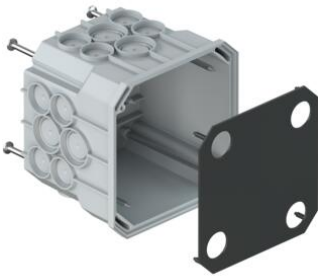


## Junction casings



### Flush-mounted junction box - 101mm

- for wood and steel formwork on in-situ concrete and for flush-mounted (masonry) installations
- with internally fitting cover as adhesive attachment surface
- where fixing to vertical formwork and using adhesive to attach, the box must be mounted on a telescopic support (item no. 9957)
- for loose terminals up to 4 mm<sup>2</sup>

<b>Order number:</b>	<b>9908.01</b>
EAN:	7611614037493
Length	115 mm
Width	115 mm
Depth	101 mm
Break-out openings Ø 20 mm	16
Combination conduit entries M20/25	8
Number of nails	4
Dispatch	20

Junction casings in all sizes and for almost any kind of installations. This product range features practical housing sizes as well as a robust housing design which is perfect for building sites.

- As central junction casings for star-shaped cable laying.
- Easy to rewire when changing the way rooms are used.
- Separator walls to separate electrical circuits.
- End cover with screw attachment for VDE-compliant installation.

