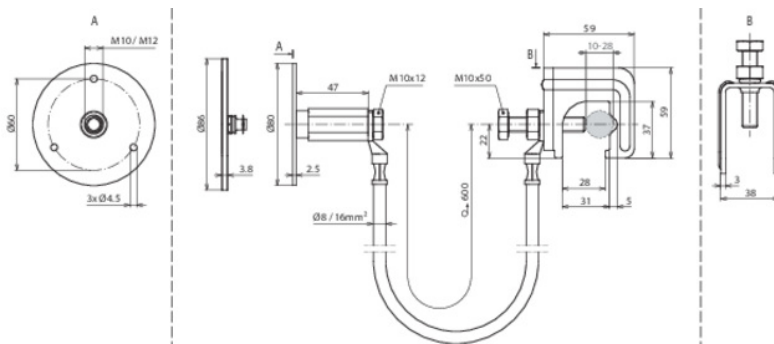


UES 16 L600 VK RD10 28 EFP (416 940)



Figure without obligation



Connection device consisting of connecting cable with connected connecting clamp and fixed earthing terminal.

Arrangement:



Type	UES 16 L600 VK RD10 28 EFP
Part No.	416 940 NEW
Connecting clamp material	St/bare
Clamping range Connecting clamp	10-28 mm
Screw Connecting clamp	M10 x 50 mm
Fixed earthing terminal material	StSt (V4A)
Fixed earthing point terminal thread	M10 / M12
Bridging cable material	Flexible copper conductor, frost-resistant
Bridging cable cable length	600 mm
Bridging cable cable cross section	16 mm ²
Cable lug Bridging cable	M10 / Cu/galSn
Lightning current carrying capability (10/350 µs)	^{*)}
Standard	EN 62561-1
Short-circuit current (AC 50 Hz / DC) (1 s; ≤ 300°C)	3.1 kA
Weight	513 g
Customs tariff number (Comb. Nomenclature EU)	85389099
GTIN	4013364360280
PU	25 pc(s)

Special lengths possible on request.

^{*)} For exact assignment, see test certificate.

We reserve the right to introduce changes in performance, configuration and technology, dimensions, weights and materials in the course of technical progress. The figures are shown without obligation.