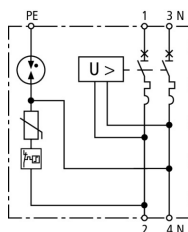


## SPD+POP 2 255 C32 (900 781)

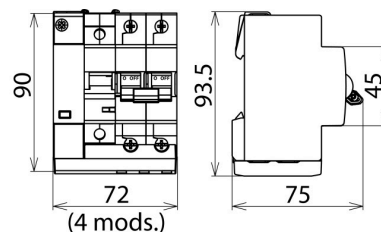
- Complete protection against transient and power frequency overvoltages
- Compact design allows easy retrofitting
- Meets the requirements of EN 61643-11 (SPD) and EN 50550 (POP)



Figure without obligation



Basic circuit diagram SPD+POP 2 255 C32



Dimension drawing SPD+POP 2 255 C32

### General

| Type  | SPD+POP 2 255 C32   |
|---|---|
| Part No.                                      | 900 781   |
| Power supply system                           | single-phase TT / TN system                               |
| Number of poles                               | 1P + N  |
| Nominal a.c. voltage (U <sub>N</sub> )        | 230 V   |
| Nominal frequency (f <sub>N</sub> )           | 50 Hz   |
| Operating temperature range (T <sub>U</sub> ) | -25 °C ... +60 °C   |
| Cross-sectional area (L, N) (min.)            | 2.5 mm <sup>2</sup> solid / flexible                      |
| Cross-sectional area (L, N) (max.)            | 16 mm <sup>2</sup> flexible / 25 mm <sup>2</sup> stranded |
| Cross-sectional area (PE) (min.)              | 0.75 mm <sup>2</sup> solid / flexible                     |
| Cross-sectional area (PE) (max.)              | 6 mm <sup>2</sup> flexible / 10 mm <sup>2</sup> solid     |
| Degree of protection protection               | IP 20   |
| Capacity                                      | 4 module(s), DIN 43880                                    |
| Mounting                                      | 35 mm DIN rails acc. to EN 60715                          |

### SPD

| Type  | SPD+POP 2 255 C32              |
|---|--------------------------------|
| Part No.  | 900 781                        |
| SPD according to EN 61643-11 / ... IEC 61643-1/-11                | type 2                         |
| Max. continuous operating voltage (a.c.) [L-N] (U <sub>c</sub> )  | 275 V                          |
| Max. continuous operating voltage (a.c.) [N-PE] (U <sub>c</sub> ) | 255 V                          |
| Follow current extinguishing capability [N-PE] (I <sub>n</sub> )  | 100 A                          |
| Nominal discharge current (8/20 μs) [L-N] (I <sub>n</sub> )       | 5 kA                           |
| Nominal discharge current (8/20 μs) [N-PE] (I <sub>n</sub> )      | 20 kA                          |
| Max. discharge current (8/20 μs) [L-N] (I <sub>max</sub> )        | 15 kA                          |
| Max. discharge current (8/20 μs) [N-PE] (I <sub>max</sub> )       | 40 kA                          |
| Voltage protection level (U <sub>p</sub> )                        | ≤ 1.5 kV                       |
| Protective conductor current (I <sub>PE</sub> )                   | ≤ 5 μA                         |
| Response time [L-N] (t <sub>λ</sub> )                             | ≤ 25 ns                        |
| Response time [N-PE] (t <sub>λ</sub> )                            | ≤ 100 ns                       |
| Max. mains-side overcurrent protection                            | MCB C 63 A                     |
| Short-circuit withstand capability (I <sub>SCCR</sub> )           | 6 kA                           |
| Temporary overvoltage (TOV) L-N (U <sub>T</sub> )                 | 335 V / 5 s                    |
| Temporary overvoltage (TOV) [N-PE] (U <sub>T</sub> )              | 1200 V / 200 ms                |
| TOV characteristic  | withstand                      |
| Operating state / fault indication                                | green / red                    |
| Number of ports   | 1                              |
| Enclosure material  | thermoplastic, grey, UL 94 V-0 |
| Place of installation   | indoor installation            |

**POP**

| Type                             | SPD+POP 2 255 C32 |
|----------------------------------|-------------------|
| Part No.                         | 900 781           |
| Tested to                        | EN 50550          |
| Max. non-tripping voltage (a.c.) | 255 V             |
| Max. tripping voltage (a.c.)     | 415 V             |
| Tripping time at 275 V a.c.      | 8 s               |
| Tripping time at 400 V a.c.      | 120 ms            |
| Max. current at 275 V a.c.       | 0.4 A             |
| Max. current at 400 V a.c.       | 0.6 A             |
| Power consumption                | 0.7 VA            |
| Trip indicator                   | red               |

**MCB**

| Type   | SPD+POP 2 255 C32 |
|--|-------------------|
| Part No.   | 900 781           |
| Tripping characteristic                                      | C                 |
| Nominal alternating current (I <sub>n</sub> )                | 32 A              |
| Rated switching capacity (I <sub>cn</sub> ) acc. to EN 60898 | 6 kA              |
| Weight   | 390 g             |
| Customs tariff number (Comb. Nomenclature EU)                | 85363030          |
| GTIN   | 4013364156210     |
| PU   | 1 pc(s)           |

We reserve the right to introduce changes in performance, configuration and technology, dimensions, weights and materials in the course of technical progress. The figures are shown without obligation.