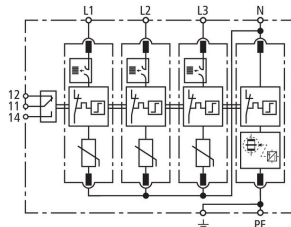


## DG M TT ACI 275 FM (952 341)

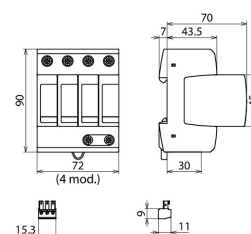
- ACI switch / spark gap combination integrated in the protection module
- Prewired complete unit consisting of a base part and plug-in protection modules
- High reliability due to "Thermo Dynamic Control" SPD monitoring device and ACI technology
- No backup protection device required due to ACI technology
- Smaller connection cross-section of 6 mm<sup>2</sup> always sufficient



Figure without obligation



Basic circuit diagram DG M TT ACI 275 FM



Dimension drawing DG M TT ACI 275 FM

Modular surge arrester with Advanced Circuit Interruption (ACI) for TT and TN-S systems (3+1 configuration).

Type	DG M TT ACI 275 FM
Part No.	952 341
SPD according to EN 61643-11 / IEC 61643-11	type 2 / class II
Energy coordination with terminal equipment ( $\leq 10$ m)	type 2 + type 3
Nominal a.c. voltage ( $U_N$ )	230 / 400 V (50 / 60 Hz)
Max. continuous operating voltage (a.c.) [L-N] ( $U_C$ )	275 V (50 / 60 Hz)
Max. continuous operating voltage (a.c.) [N-PE] ( $U_C$ )	255 V (50 / 60 Hz)
Nominal discharge current (8/20 $\mu$ s) [L-N] ( $I_n$ )	20 kA
Nominal discharge current (8/20 $\mu$ s) [N-PE] ( $I_n$ )	80 kA
Voltage protection level [L-N] / [N-PE] ( $U_P$ )	$\leq 1.5$ / $\leq 1.5$ kV
Voltage protection level [L-N] / [N-PE] at 5 kA ( $U_P$ )	$\leq 1,5$ / $\leq 1,5$ kV
Follow current extinguishing capability [N-PE] ( $I_f$ )	100 A <sub>rms</sub>
Response time [L-N] ( $t_A$ )	$\leq 100$ ns
Response time [N-PE] ( $t_A$ )	$\leq 100$ ns
Additional external fuse	not required
Short-circuit withstand capability ( $I_{sCCR}$ )	25 kA <sub>rms</sub>
Temporary overvoltage (TOV) [L-N] ( $U_T$ ) – Characteristic	440 V / 120 min. – withstand
Temporary overvoltage (TOV) [N-PE] ( $U_T$ ) – Characteristic	1200 V / 200 ms – withstand
Leakage current	no leakage current
Operating temperature range ( $T_U$ )	-40 °C ... +80 °C
Operating state / fault indication	green / red
Number of ports	1
Cross-sectional area (min.)	1.5 mm <sup>2</sup> solid / flexible
Cross-sectional area (max.)	35 mm <sup>2</sup> stranded / 25 mm <sup>2</sup> flexible
For mounting on	35 mm DIN rails acc. to EN 60715
Enclosure material	thermoplastic, red, UL 94 V-0
Place of installation	indoor installation
Degree of protection	IP 20
Capacity	4 module(s), DIN 43880
Approvals	KEMA
Type of remote signalling contact	changeover contact
Switching capacity (a.c.)	250 V / 0.5 A
Switching capacity (d.c.)	250 V / 0.1 A; 125 V / 0.2 A; 75 V / 0.5 A
Cross-sectional area for remote signalling terminals	max. 1.5 mm <sup>2</sup> solid / flexible
Weight	452 g
Customs tariff number (Comb. Nomenclature EU)	85363030
GTIN	4013364376632
PU	1 pc(s)

We reserve the right to introduce changes in performance, configuration and technology, dimensions, weights and materials in the course of technical progress. The figures are shown without obligation.