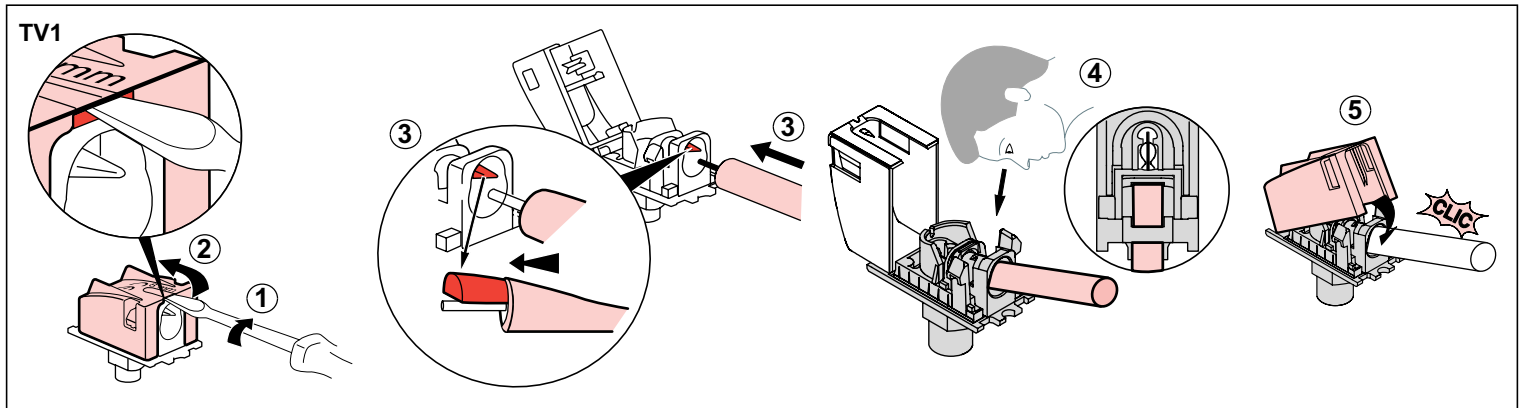
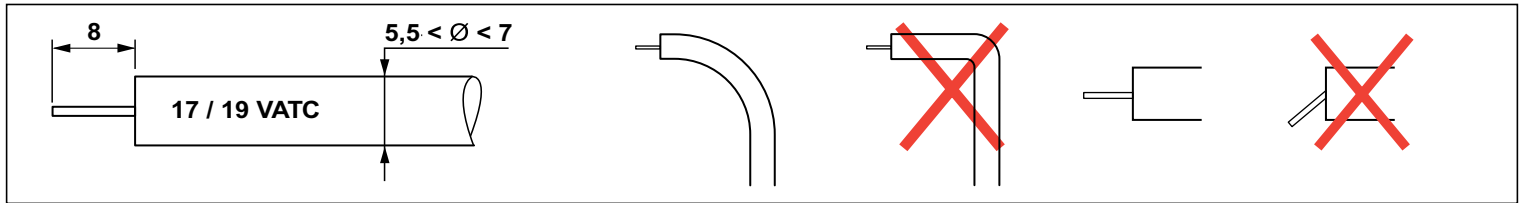
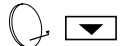


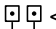
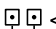


 TV1	Coax	Attenuation 	 500 mA	Control 22 / 0,6 KHz / V	Return path 4 – 30 MHz	Channel 1 47 – 68 MHz	Channel FM 87,5 – 108 MHz	Channel VHF 120 – 470 MHz	Channel UHF 470 – 862 MHz	Channel SAT 950 – 2400 MHz
	Z = 75 Ω		—							
		dB	mA							
		i < 1,5 dB								



	Coax	Attenuation		Control	Return Path	Channel 1	Channel FM	Channel VHF	Channel UHF	Channel SAT
	Z = 75 Ω		500 mA							
			—	22 / 0,6	4 – 30	47 – 68	87,5 – 108	120 – 470	470 – 862	950 – 2150
		dB	mA	KHz / V	MHz	MHz	MHz	MHz	MHz	MHz
TV2	 TV	 < dB i = 10 dB								
TV3		 < dB i = 14 dB								

