





Version 3.3.X

**Contents**

- 1. Hardware and Software requirements** **4**
- 1.1 PC requirements 4
- 1.2 Device requirements 4
- 2. Installation** **5**
- 3. Connection to the PC** **8**
- 4. Basic operating concepts** **10**
- 4.1 Menus and toolbar 11
- 4.2 Display window 12
- 4.3 Work Tabs 13
- 5. Monitoring** **14**
- 5.1 Curves monitoring 15
- 6. Setting favourites** **15**
- 7. Print to file** **16**
- 8. Test execution** **16**
- 9. Creating a LOG file** **17**
- 10. Send/receive configuration** **17**
- 11. Firmware Update** **17**
- 12. User profiles** **19**

## 1. Hardware and Software requirements

### 1.1 PC requirements

#### Hardware Requirements

- Personal Computer with Pentium III processor
- Minimum RAM memory 1GB, recommended 2GB
- Resolution 1024 x 768
- 32 bit Colour
- Mouse

#### Software Requirements

- Windows 7 or greater
- Microsoft.NET 4.0 or greater

### 1.2 Device requirements

For devices which support the monitoring function (listed below) check the device technical version (note 1) or firmware version;

Product	Version	Range	Minimum compatible release
DMX <sup>3</sup>	MP4	2500-4000-6300	Display firmware 2.5.X
	MP6	2500-4000-6300	Display firmware 3.2.X

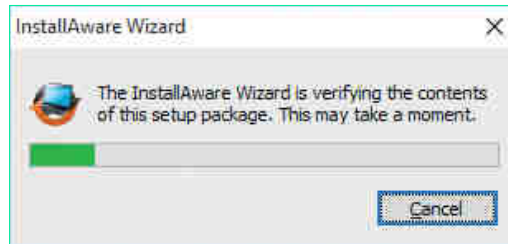
Product	Version	Protection	Minimum compatible release
DPX <sup>3</sup>	160	Thermal magnetic with earth fault protection	rev. 5 (* mid 2016)
		Earth fault protection only	rev. 5 (* mid 2016)
	250	Thermal magnetic with earth fault protection	rev. 5 (* mid 2016)
		Earth fault protection only	rev. 5 (* mid 2016)
		Electronic	rev. 4
		Electronic with earth fault protection	rev. 4
	630	Electronic	rev. 4
	1600	Electronic	rev. 2

- note 1: the technical version is the 6<sup>th</sup> digit of the traceability code written on the product label (e.g. 11W40 1 80);

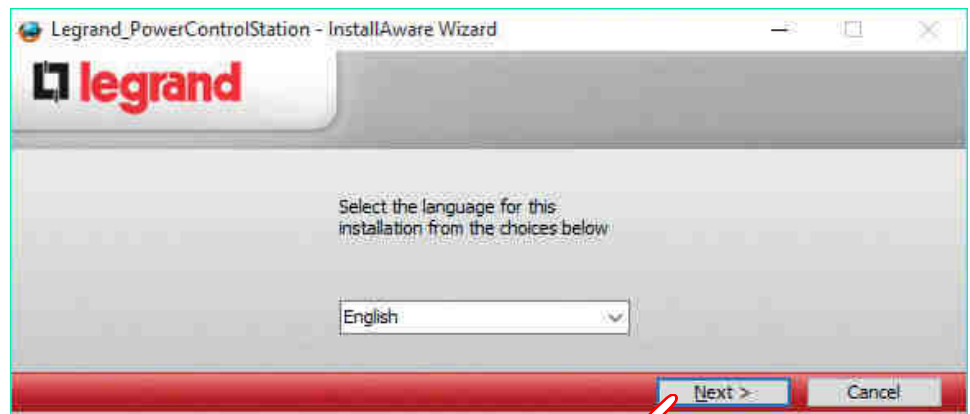
## 2. Installation

In order to install the Legrand PowerControlStation software, proceed as follows:

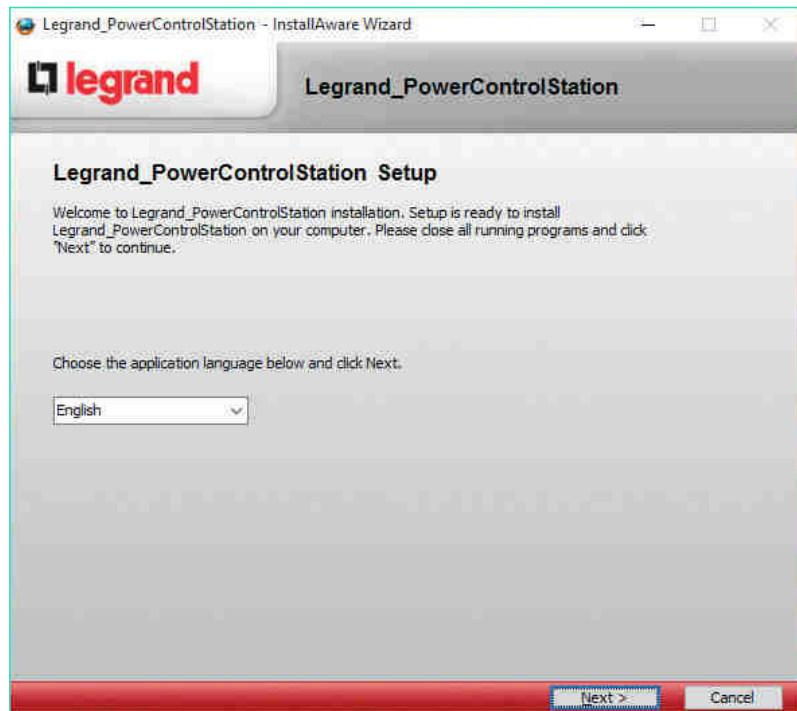
1. Launch the application installer;
2. From the main page in web format select "Install Legrand PowerControlStation";
3. The installation program will start copying the system files needed for the installation of the Legrand PowerControlStation software.  
If previous versions of the software are found, they will be automatically uninstalled before the new installation.



Select the language to be used when displaying the screens during the installation of the program, and click "OK".



Select the desired application language among those available. Click “Next” to continue installation.



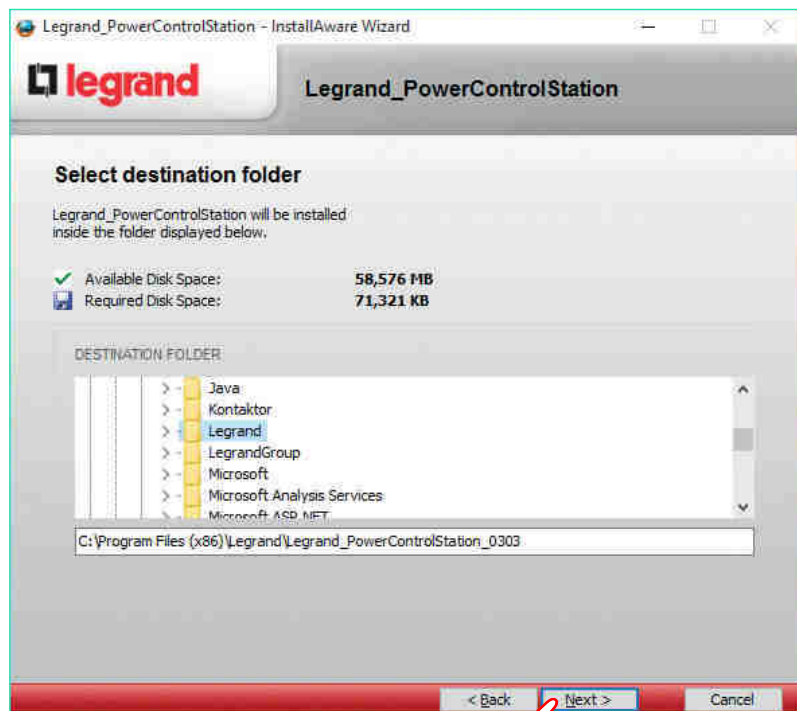
The language can also be changed when running the application, without the need for reinstalling the program.

The system will prompt to enter the destination folder where Legrand PowerControlStation will be installed.

The installation procedure will suggest the folder:

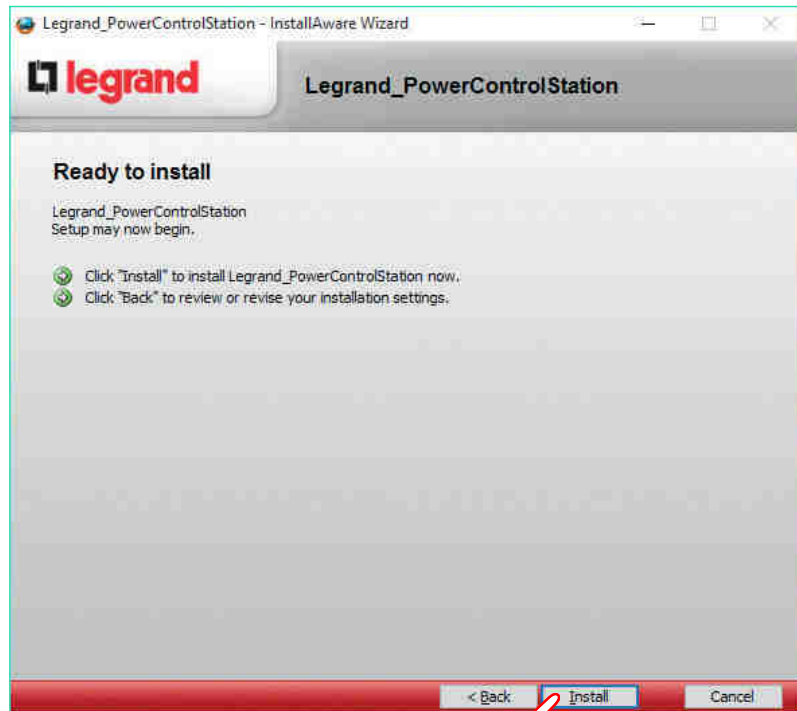
C:\Program Files (x86)\Legrand\Legrand\_PowerControlStation\_0303.

If desired, the user can select another hard drive location.

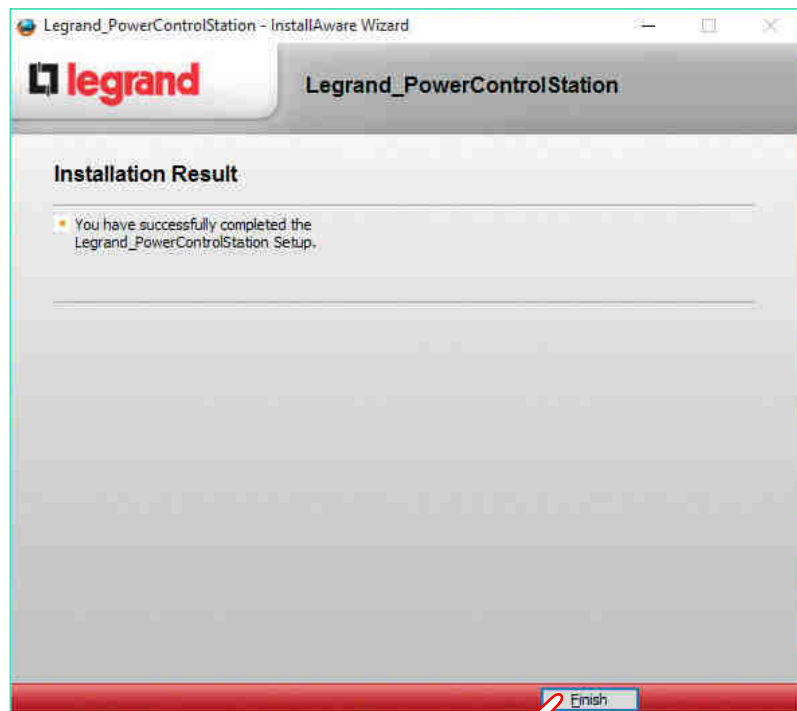


Click “Next” to continue.

Click "Install" to start installing the software.



Once the installation has been completed, the following screen is displayed. Click "Finish" to exit installation.



### 3. Connection to the PC



Before connect the device to the PC, be sure the protection unit is powered up and stably connected to auxiliary supply module. An incorrect operations sequence can lead to protection unit damage.



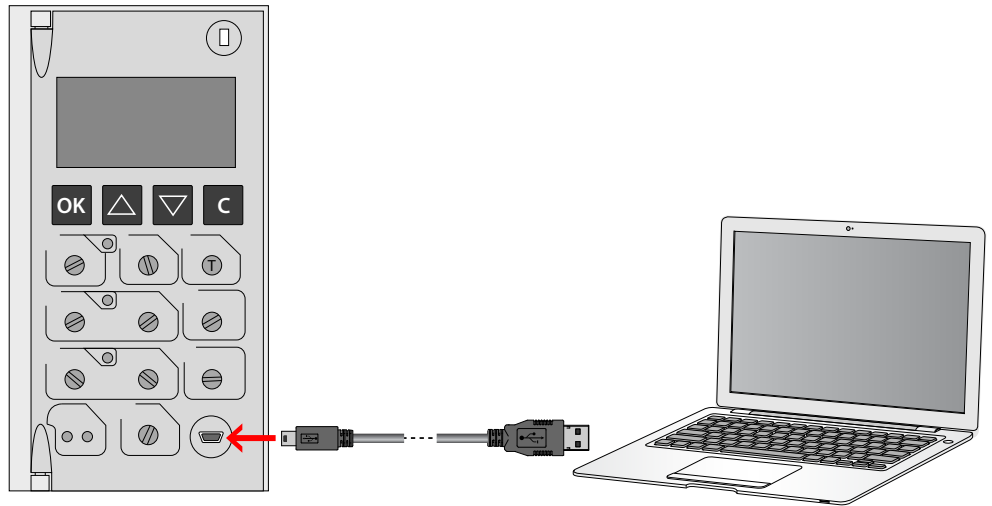
Once the device is connected via USB, Microsoft Windows will begin to search for the correct drivers for the associated device. Whenever the automatic search is not successful, the installation of the correct driver can be forced, downloading the latest version of the virtual COM driver from the page web: <http://www.ftdichip.com/Drivers/VCP.htm>



Some devices need to be properly supplied (green LED enlightened) in order to be connected to the software. The software will alert the user as soon as these devices are selected.

In order to use Power Control Station software the electronic device has to be connected to the PC using a USB-miniUSB (type B) cable.

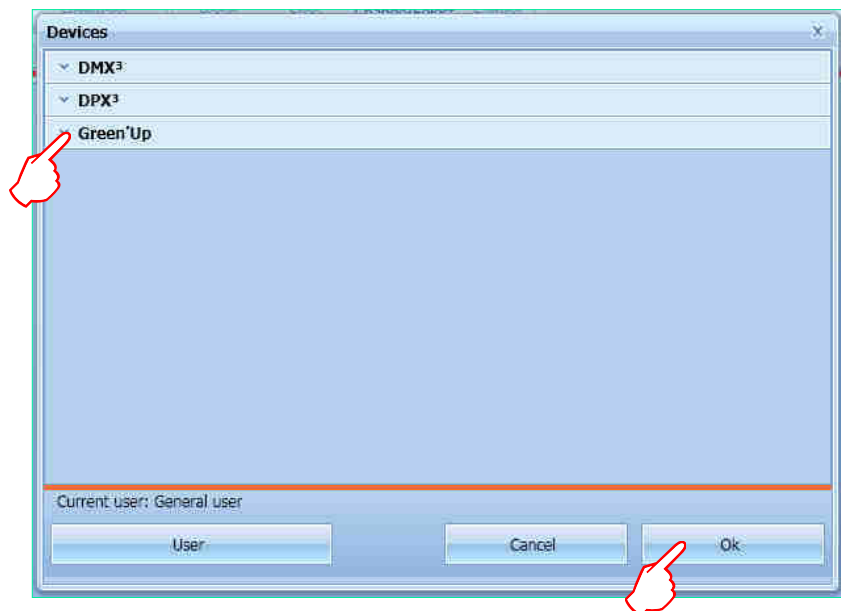
#### USB connection



Once the connection has been established, the Legrand PowerControlStation software can be initialised.

If necessary, set the user profile (see chapt. 11).

Select the correct device from the list.

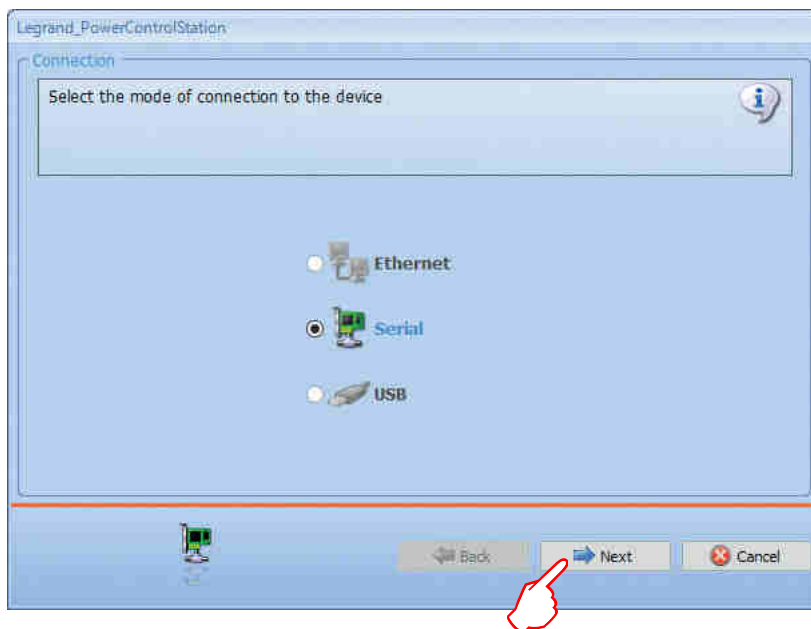


Click "OK" to continue.



## Legrand PowerControlStation

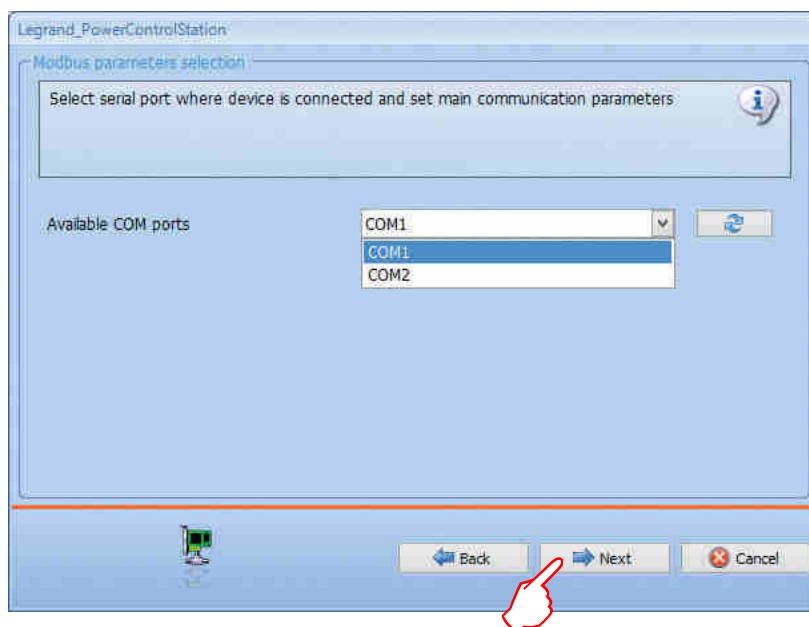
Exclusively for devices which support the monitoring function (see sect. 1.2), the software will require the mode of connection, as indicated below:



Select the serial connection for the connected device.

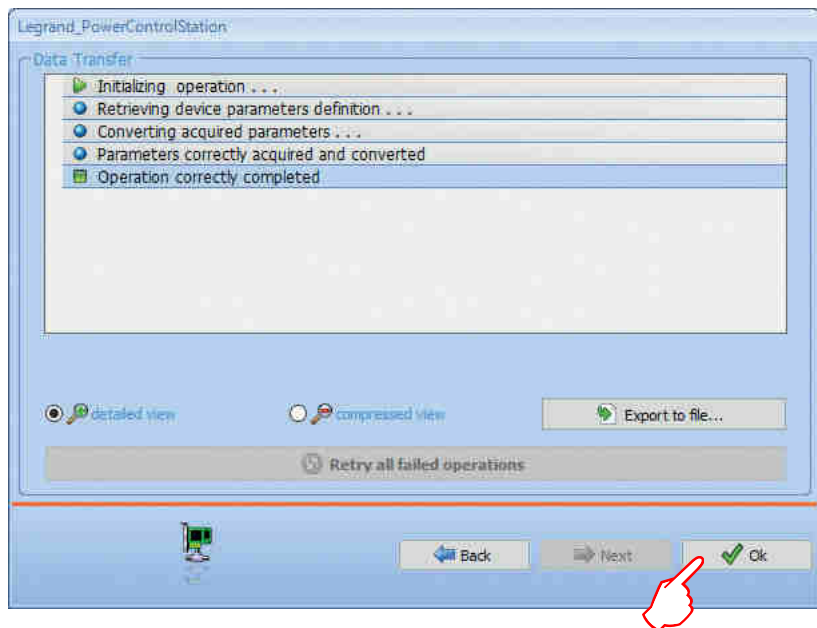
Click "Next" to continue.

Select the device communication port and click "Next" to continue.



It is possible to check the communication port using the "Device management" menu in the Windows item "COM and LPT Ports".  
The port is identified by item "USB Serial Port"

During the loading the following screen will appear:

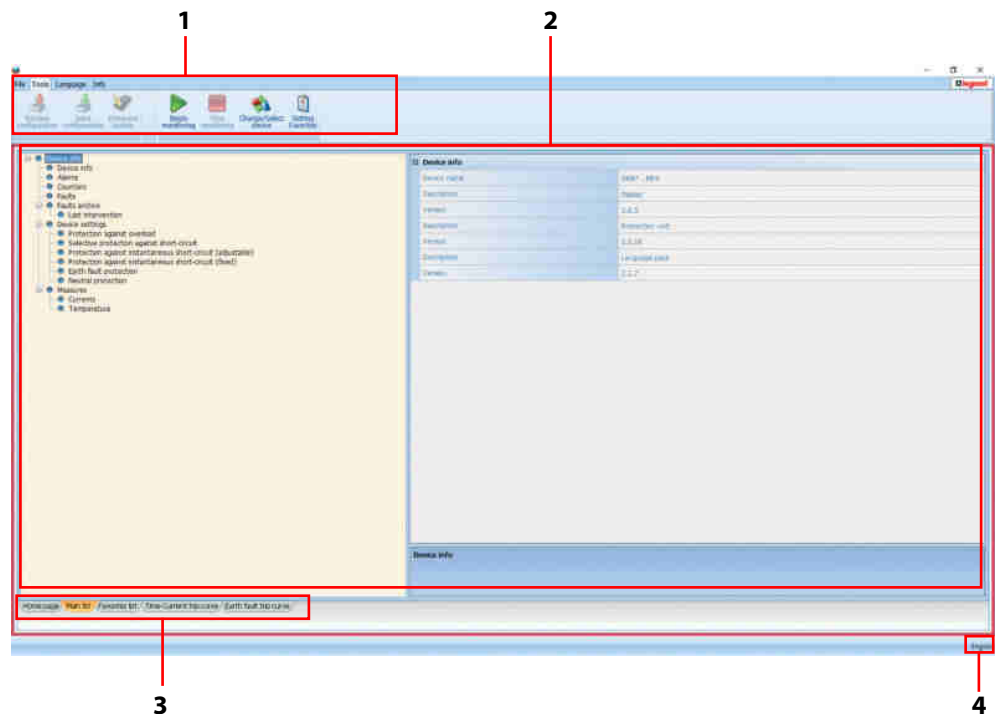


Once loading is complete, click "OK" to access Legrand PowerControlStation.

## 4. Basic operating concepts

The Legrand PowerControlStation tool enables managing the information contained in the electronic devices.

At startup, the software will show a screen split into 4 areas:



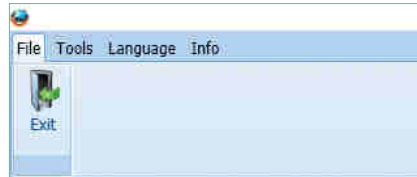
1. **Menus and toolbar:** it includes the pushbuttons and the bars used for accessing all the Legrand PowerControlStation functions
2. **Display window:** it displays the detailed information relating to the item selected.
3. **Work tabs:** this is used to move through the cards. Each card contains several informations
4. **Language:** indication of language in use

## 4.1 Menus and toolbar

The window menus show the following functions:

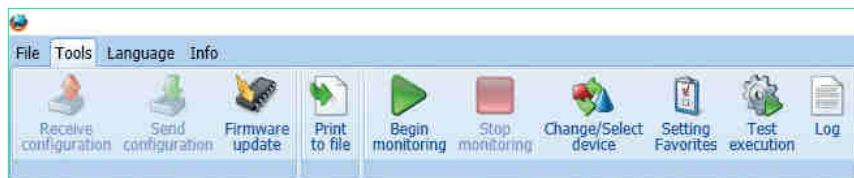
### File:

- **Exit:** to exit the program.



### Tools:

- **Receive configuration:** download adjustment parameters from the device.
- **Send configuration:** send adjustment parameters to the device.
- **Update Firmware:** to update the device firmware.
- **Print to file...:** to create a file containing all the data read by the software and present on the device ("...\Documents\Legrand\LegrandPowerControlStation\_03XX\log").
- **Begin monitoring:** to collect the values measured by the device and all the settings.
- **Stop monitoring:** to stop collecting the values measured by the device.
- **Change/select device:** to restart a new connection with the device.
- **Setting favorites:** to open the window for the selection of the filters in the favorites tab.
- **Test execution:** to open the window for access to the available tests.
- **Log:** to create the monitoring log.



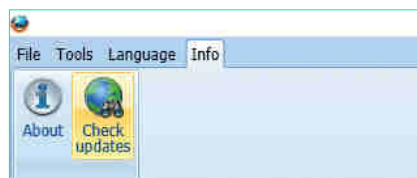
### Language:


- **Language:** to select the software language.



### Info:

- **About:** display information concerning the Legrand PowerControlStation software version.
- **Check updates:** currently not available.



 Some functions could be disabled on the base of device or profile selected

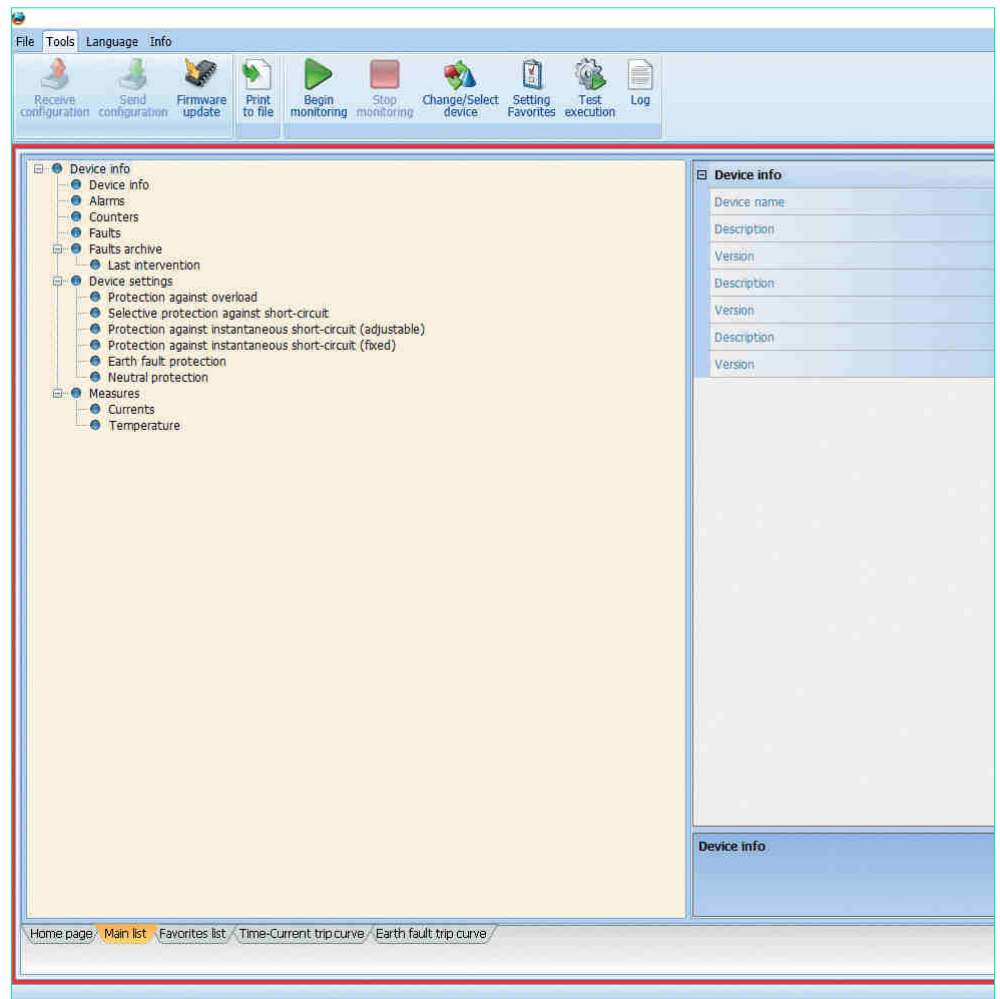
## 4.2 Display window

The Tree Menu can be used to quickly scroll through the information contained inside the device. Each item containing sub-items is displayed with a “+” sign, which once clicked will expand and show the submenu items.

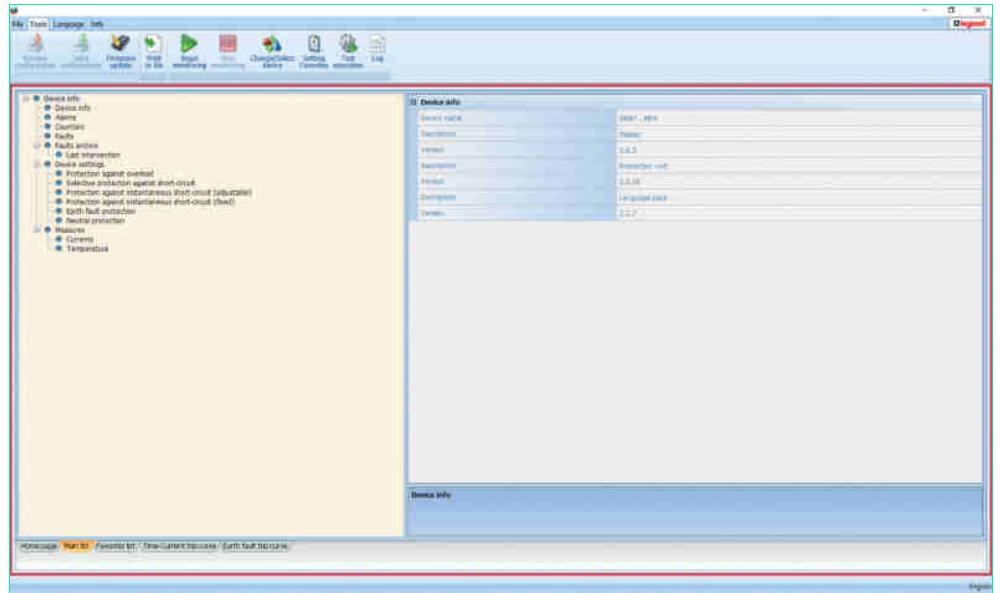
Select the last Tree Menu item to display the information for that section in the “Display window”.



*The quantity of information shown by the software may differ from ones present on the protection display.*



## 4.3 Work Tabs



The Legrand PowerControlStation software offers different work tabs. These can be selected with a click.

**Home page:** main page, activated as default when the monitoring starts; it shows the main device information (configuration, state, adjustments, measurements).

**Main list:** shows all the available information on the device; such information can be viewed using the Tree Menu.

**Favorites list:** it only shows the information selected in Setting Favorites panel.

**Time/current curve:** shows the protection trip curve against overload and short-circuit.

**Ground fault trip curve:** shows the protection trip curve against ground fault.

**RCD trip curve:** shows the protection trip curve against earth leakage fault.



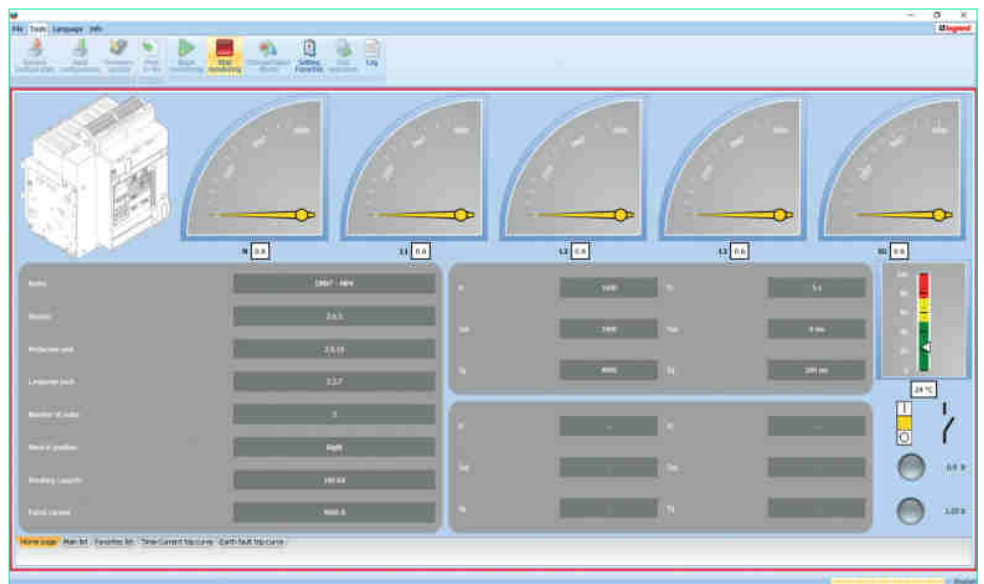
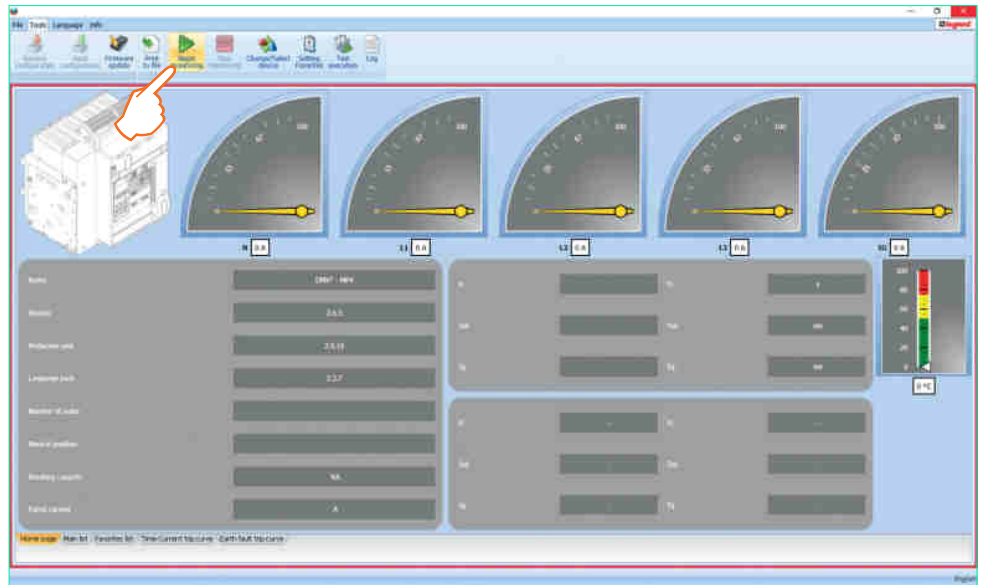
## 5. Monitoring

The monitoring function is available for some devices and/or technical versions (see sect. 1.2) only.

Click “Begin monitoring” to activate the procedure for the reading of the information contained in the device connected.

Using the Tree Menu and work tabs it is now possible to consult the data that will be updated in real time.

To complete the monitoring procedure click “Stop monitoring”.



### 5.1 Curves monitoring

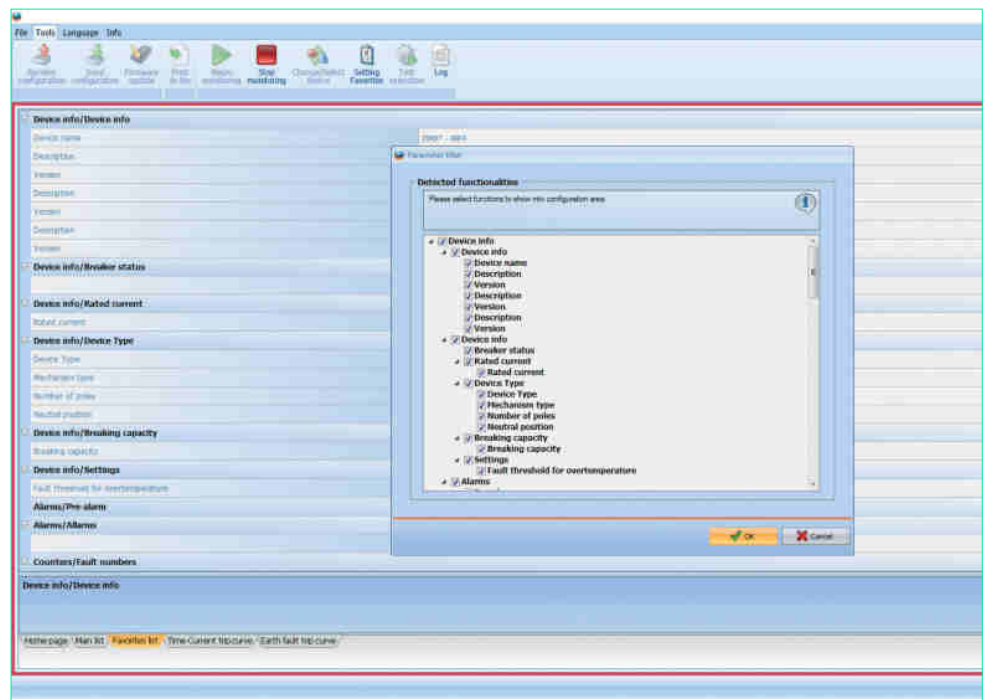
With Legrand PowerControlStation it is possible to get the status of protections set on device and to see it graphically, as trip curve and ground fault trip curve.

**i** changing values of protection on device, graphical representation on software will change automatically run-time.



## 6. Setting favourites

The Legrand PowerControlStation software enables selecting the most useful, or the most used information, and display it in one single screen inside the dedicated card. The selection of such information is performed by clicking the “Favorites filter setup” on the toolbar, or using the “Tools” menu. Select the sub-item to be displayed, or the main item, which will automatically also select all the “sub-items”.



## 7. Print to file



The function Print To File cannot be activated if the monitoring is active. Thus remember to stop the monitoring before requesting the print.

**Be careful to do not overwrite useful reports already saved.**

This function is available exclusively for some devices and/or user profiles.

The function Print To File allows to export the data transmitted by the device (configuration, adjustments, alarms, event history, measurements...) in an editable format.

By pressing on the pushbutton, the software generates a report (in .xlsx format) containing the information selected in the Setting Favorites panel (see cap. 6). This report, already formatted and ready for print, is saved in the folder "...\\Documents\\Legrand\\LegrandPowerControlStation\_03XX\\log".

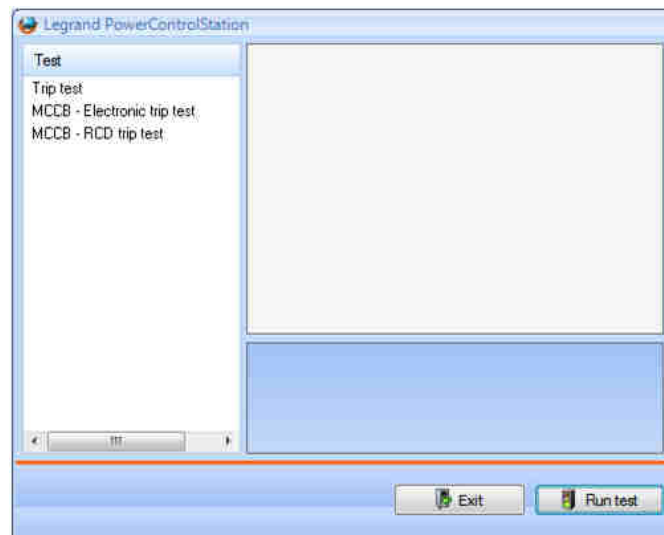
Exclusively for some devices and/or user profiles, advanced reports can also be generated (in .csv format) for technical support purposes.

## 8. Test execution

This function is available exclusively for some devices and/or user profiles.

This function can command the device to perform some diagnostic tests via software.

Click the "Test Execution" key to open the following window:



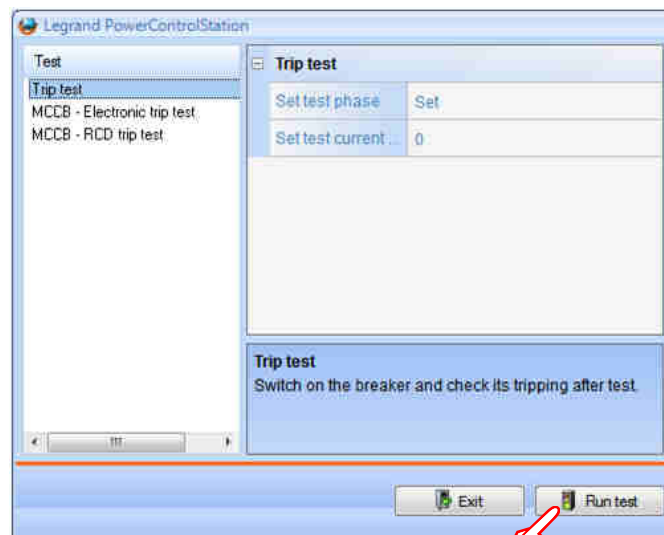
Some tests, for instance the diagnostic trip test, could cause the breaking of main contacts. By the way, **make sure there are no consequences to the installation.**

. Trip test: suitable for DMX<sup>3</sup> 2500/4000/6300 MP4 and MP6 protection units

. MCCB - trip test: suitable for DPX<sup>3</sup> 250/630/1600 electronic circuit breakers

. MCCB - RCD trip test: suitable for DPX<sup>3</sup> 160/250 residual current devices

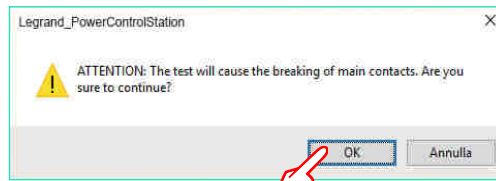
Select the test to be performed among the ones available on the list, verify that the breaker is in "ON" position and click "Run test".



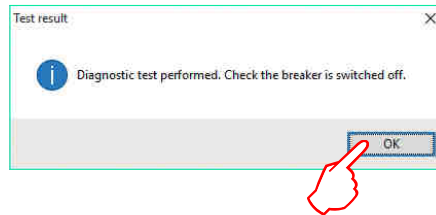
Please note some devices need to be correctly supplied in order to guarantee the tripping of the device.



Please, pay attention of Warning message, then click "OK" to start the test



After a while a message will inform about the conclusion of the test. Please, pay attention if further checks are required



## 9. Creating a LOG file

This function is available exclusively for some devices and/or user profiles.

Click "LOG" to select the corresponding mode. LOG file saves to an appropriate file all the operations performed using the Legrand PowerControlStation, as well as all the interrogations performed if the monitoring procedure is being performed.

Click the same pushbutton again to end the recording session. The information stored can now be viewed in a file saved in folder: "...\Documents\Legrand\LegrandPowerControlStation\_03XX\log".

## 10. Send/receive configuration

This function is available exclusively for some devices and/or user profiles.

The send/receive configuration function allows to modify the adjustments of the protection device via software, avoiding acting directly on the product user interface and thus saving time in the case of multiple settings.

## 11. Firmware Update

This function is available exclusively for some devices and/or user profiles.

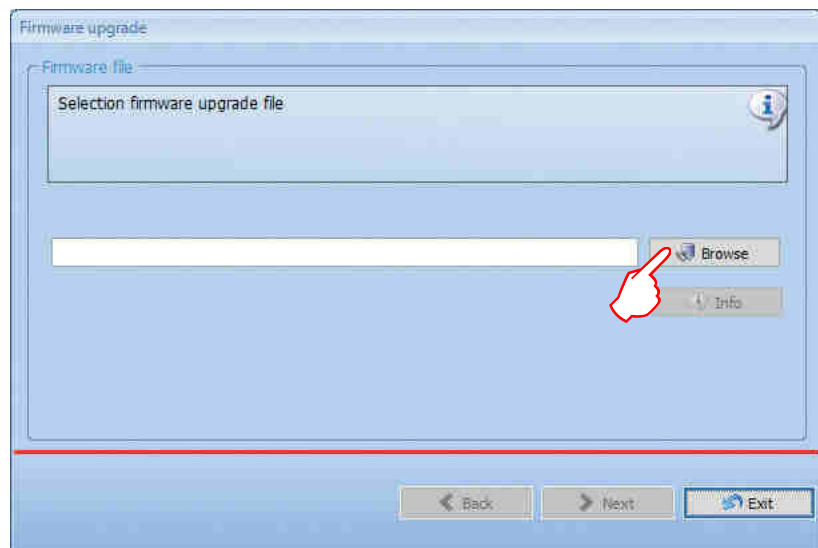
Click "Update firmware" to update the Firmware on the devices.

Once this screen appears click "Browse"

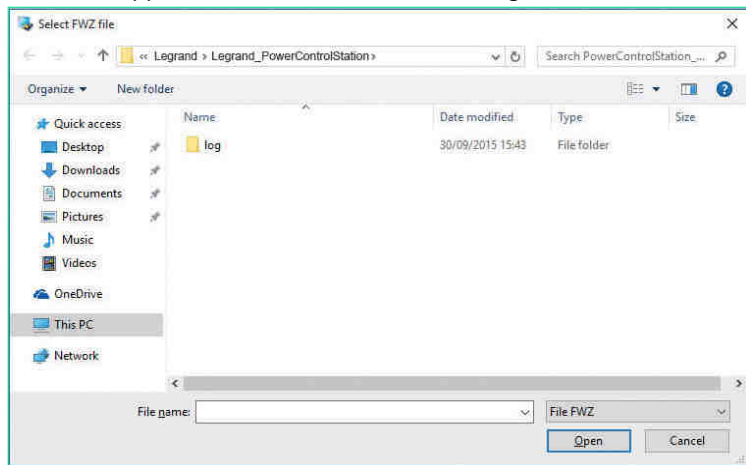


**Before proceed with firmware update, be sure the protection unit is powered up and stably connected to auxiliary supply module.**

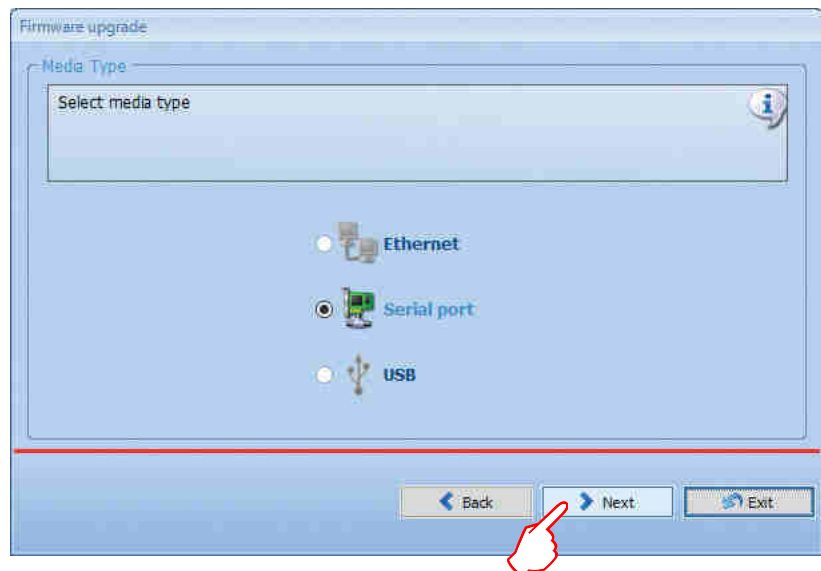
*An incorrect or instable supply can interrupt the updating process and corrupt the device firmware, compromising its correct working.*



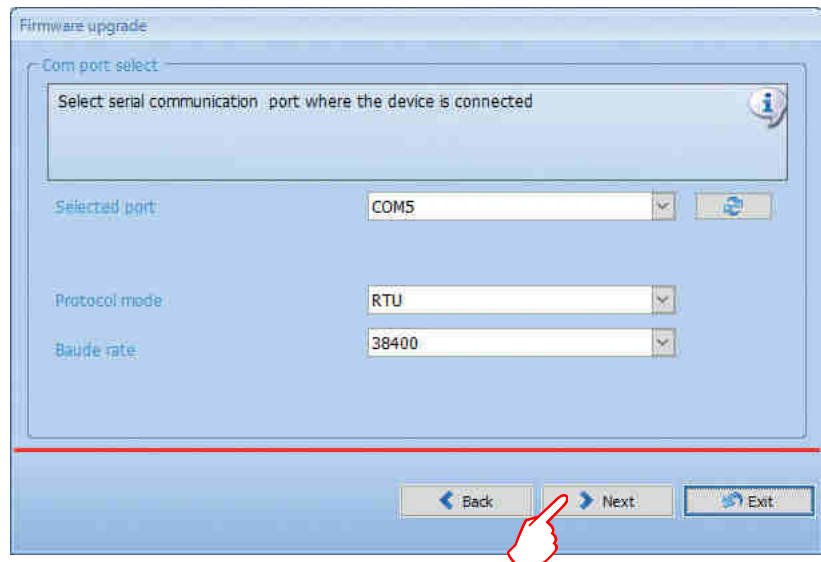
When browse window appears, select the file (.fwz) containing the firmware to be loaded:



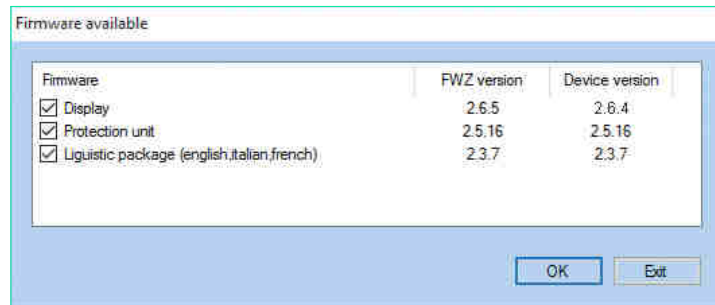
Click "Open" to show the screen for the selection of the connection mode. Leave the selection as it is and click "Next".



It is now possible to select the port the device is connected to (see chapter "Connection to the PC"), the mode, and the transmission speed; once all selections have been made click "Next".



Once the firmware on the device has been checked, a screen will be displayed, showing the firmware selected for installation. Here the user can select the actual components to be updated:



Complete the procedure by clicking "OK".

## 12. User profiles

The software can manage different user profiles, to which correspond diversified accesses to the various functions of the application.



The default profile is "generic user".

This profile can perform basic operations (monitoring protection devices, updating firmware of specific products); the advanced functions are instead forbidden.

The profiles available are listed in the following table; excluding the generic user (default), the profiles can be changed by entering a password.

User profile table		
Profile name	User task	Password
Generic user (default)	Final customer, basic user	No password
Professional user	Installer, panel builder, maintenance engineer	0000
Technical assistance	Legrand technical assistance/support	Confidential
Restricted area	Legrand developers area	Confidential

In user panel is always shown the profile currently in use.



LEGRAND  
Pro and Consumer Service  
BP 30076 - 87002  
LIMOGES CEDEX FRANCE  
[www.legrand.com](http://www.legrand.com)