

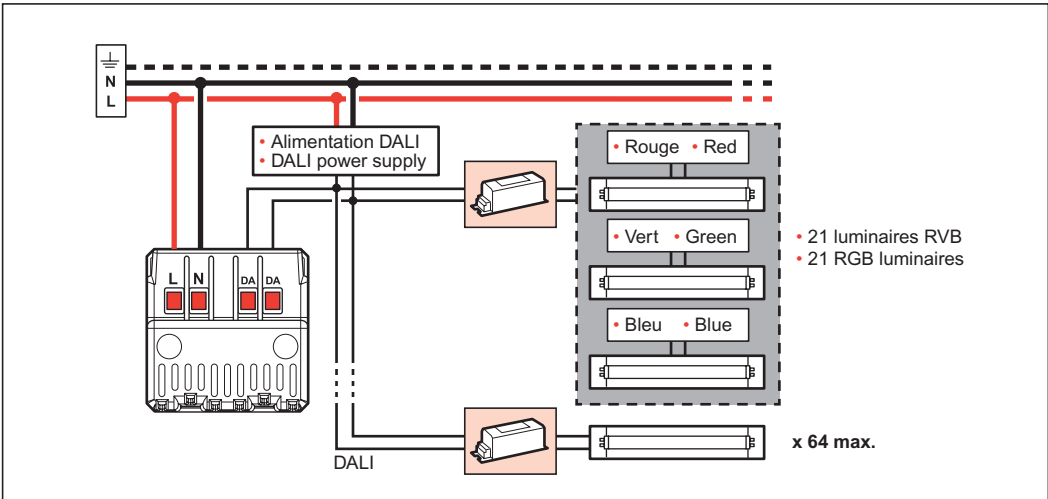
	110 V~ - 240 V~
	16V= (22V= max.)
	50 / 60 Hz
	2 x 2,5 mm ²
	-5°C / +45°C

• Application
• Application

- Choix de la couleur
• Choice of colour
- Saturation (couleur → blanc)
• Saturation (colour → white)
- Intensité
• Brightness

• Apprentissage
• Learn phase

- Rouge
• Red
- Vert
• Green
- Bleu
• Blue
- Bouton LEARN
• LEARN button
- LED LEARN
- Next





- Flash
- Flash



- Allumé continu
- On continuously



- Clignotant rapide
- Flashing quickly



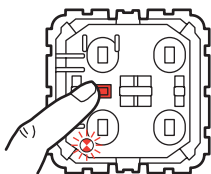
- Clignotant lent
- Flashing slowly

- Éteint
- Off

• Configuration

• Configuration

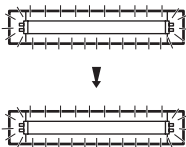
- ① • Distribution des adresses DALI (64 adresses max.)
 • Distribution of DALI addresses (64 addresses max.)



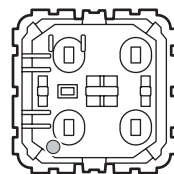
- 2 appuis courts < 1 s
- 2 short presses < 1 s



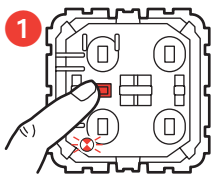
- Défilement des couleurs
- Scrolling through the colours



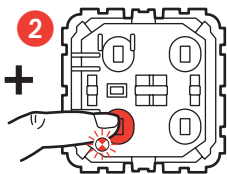
< 4 min



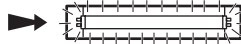
- ② • Création du lien entre adresses/couleurs pour chaque luminaire
 • Creating the link between addresses/colours for each luminaire



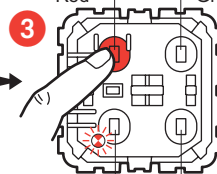
< 1 s



< 1 s

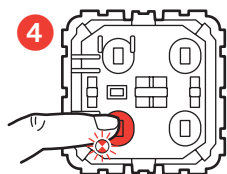


- Rouge
- Red

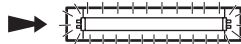


Next

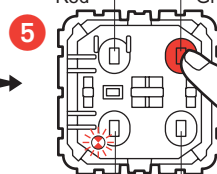
- Rouge
- Red
- Vert
- Green



< 1 s



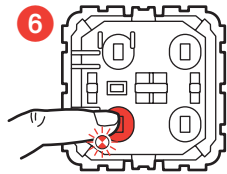
- Vert
- Green



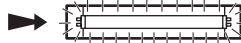
Next

- Rouge
- Red
- Vert
- Green

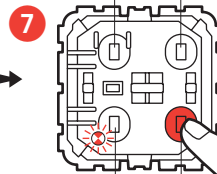
- Bleu
- Blue
- Vert
- Green



< 1 s



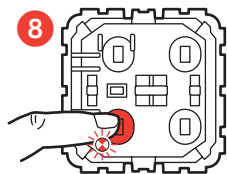
- Bleu
- Blue



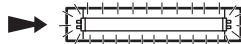
Next

- Rouge
- Red
- Vert
- Green

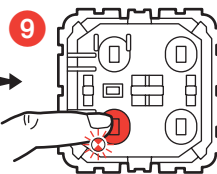
- Bleu
- Blue
- Vert
- Green



< 1 s



- Blanc
- White

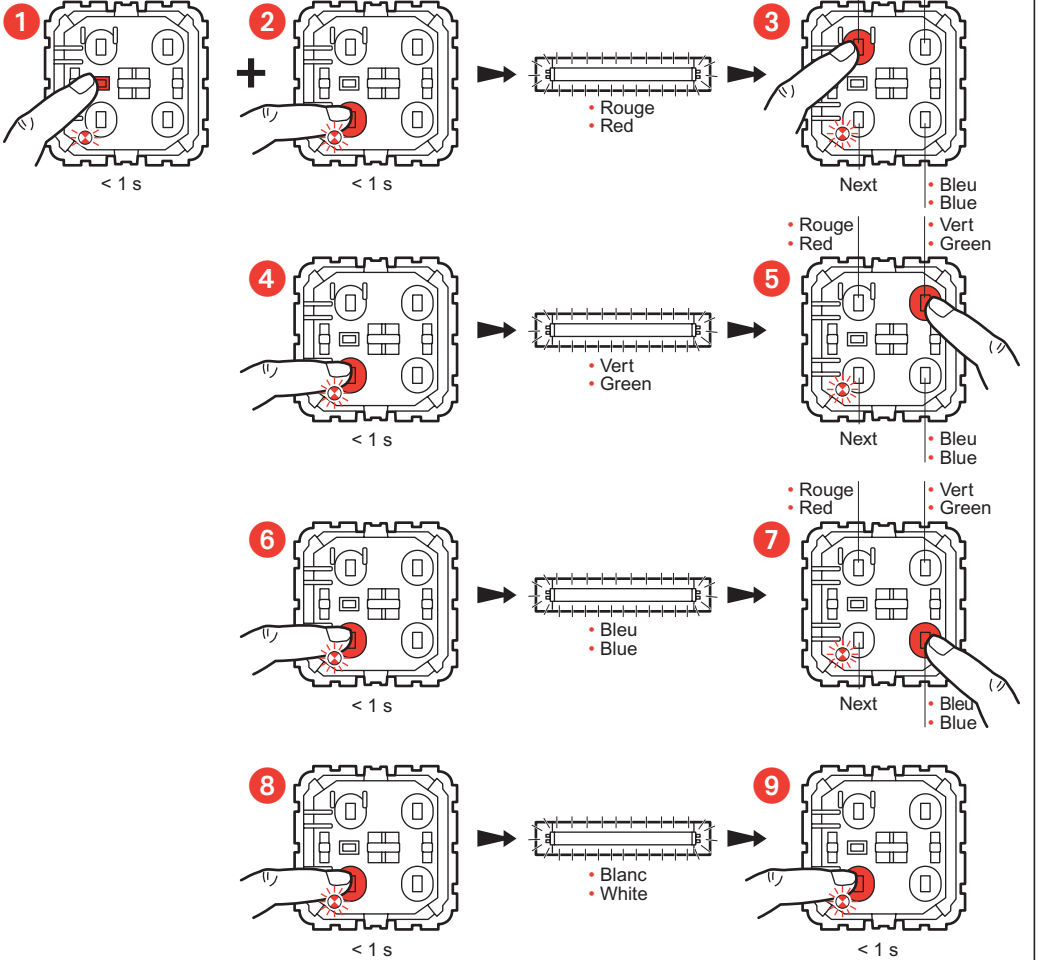


< 1 s

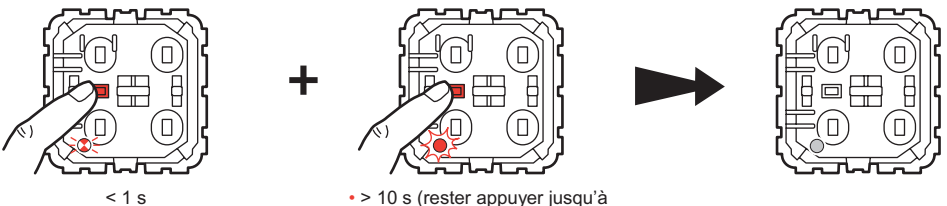
• Configuration (suite)

• Configuration (continued)

- ③ • Réouverture d'un apprentissage pour ajout d'1 luminaire et validation de toutes les couleurs
 • Reopening a learn phase to add 1 luminaire and enable all the colours



Reset



- > 10 s (rester appuyer jusqu'à clignotement rapide)
- > 10 s (hold down until the LED flashes quickly)

