

SPEED CONTROLLERS FOR EC MOTORS

Speed controller  
**R-1/010**



■ **Applications**

Applied for smooth speed control of EC motors with the control input 0-10 V.

■ **Design and control**

The controller casing is made of plastic. Switching ON/OFF is effected by means of control knob rotation. The control range starts from the mini-

mum possible value and includes the maximum possible values.

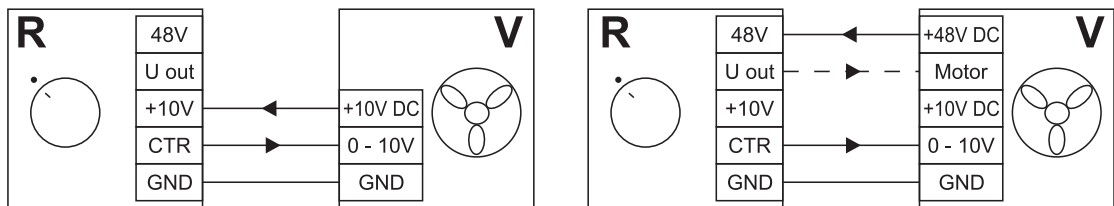
■ **Mounting**

The controller is designed for indoor mounting into special surface mounting (MKN-3) or flush mounting (MKV-4) junction box (under separate order) or into standard round electric junction boxes.

**Technical data:**

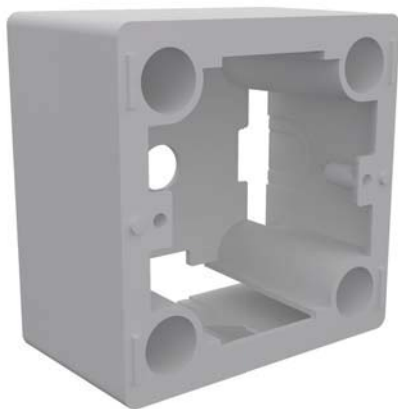
	<b>R-1/010</b>
Voltage [V]	10-48VDC
Control signal [V]	0-10
Maximum current [mA]	5mA
Overall dimensions LxWxH [mm]	78x78x63
Maximum ambient temperature [°C]	35
Protection rating	IP 40
Weight [kg]	0.12

Designation key:  
V - fan;  
R - controller R-1/010



Controller wiring diagram

**MOUNTING JUNCTION BOX**



**MKN-3 (for surface mounting)**



**MKV-4 (for flush mounting)**