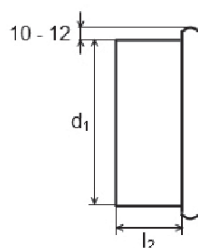
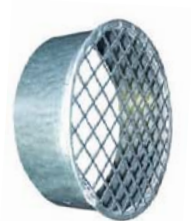


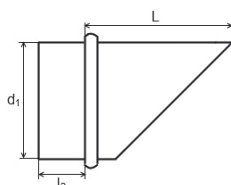
VKA – výfukový kus



- výfukový kus s ochrannou sítkou
- větrání, klimatizace

| Typ | d ₁ | l ₂ | hmotnost [kg] |
|---------|----------------|----------------|---------------|
| VKA 80 | 80 | 40 | 0,1 |
| VKA 100 | 100 | 40 | 0,1 |
| VKA 125 | 125 | 40 | 0,2 |
| VKA 150 | 150 | 40 | 0,2 |
| VKA 160 | 160 | 40 | 0,2 |
| VKA 180 | 180 | 40 | 0,3 |
| VKA 200 | 200 | 40 | 0,4 |
| VKA 225 | 225 | 60 | 0,4 |
| VKA 250 | 250 | 60 | 0,5 |
| VKA 280 | 280 | 60 | 0,6 |
| VKA 315 | 315 | 60 | 0,8 |
| VKA 355 | 355 | 80 | 1,0 |
| VKA 400 | 400 | 80 | 1,1 |
| VKA 450 | 450 | 80 | 1,2 |
| VKA 500 | 500 | 80 | 1,8 |
| VKA 560 | 560 | 80 | 2,0 |
| VKA 630 | 630 | 100 | 2,5 |
| VKA 710 | 710 | 100 | 3,0 |
| VKA 800 | 800 | 100 | 3,9 |

VKS – výfukový kus



- výfukový kus s ochrannou sítkou
- větrání, klimatizace

| Typ | d ₁ | L | l ₂ | hmotnost [kg] |
|---------|----------------|-----|----------------|---------------|
| VKS 80 | 80 | 160 | 40 | 0,3 |
| VKS 100 | 100 | 200 | 40 | 0,4 |
| VKS 125 | 125 | 212 | 40 | 0,4 |
| VKS 150 | 150 | 240 | 40 | 0,6 |
| VKS 160 | 160 | 260 | 40 | 0,7 |
| VKS 180 | 180 | 280 | 40 | 0,9 |
| VKS 200 | 200 | 300 | 40 | 1,1 |
| VKS 250 | 250 | 350 | 60 | 1,6 |
| VKS 280 | 280 | 380 | 60 | 1,8 |
| VKS 315 | 315 | 415 | 60 | 2,3 |
| VKS 355 | 355 | 455 | 80 | 2,7 |
| VKS 400 | 400 | 500 | 80 | 4,8 |
| VKS 450 | 450 | 550 | 80 | 5,3 |
| VKS 500 | 500 | 600 | 80 | 7,0 |
| VKS 560 | 560 | 660 | 80 | 9,0 |
| VKS 630 | 630 | 730 | 100 | 12,0 |
| VKS 710 | 710 | 810 | 100 | 14,3 |
| VKS 800 | 800 | 900 | 100 | 21,5 |