

## EB-MFE068 586209

Objednací kód: EB-MFE068 586209

Materiál: **Ocel**

Povrch: **Galvanicky/elektrolyticky pozinkovaný**

Nominal inner diameter: **2 inch (50)**

Inlay: **Pryž**

Přípustná užitná zátěž: **1500**

Connection size, connection facility: **M8**

Suitable for number of pipes: **1**

KIWA certified: **Ne**

FM quality mark: **Ne**

UL quality mark: **Ne**

LPCB quality mark: **Ne**

Suitable for stainless steel tube: **Ano**

Suitable for aluminium tube: **Ano**

Suitable for plastic tube: **Ano**

Max. medium temperature (continuous): **110**

Jakost materiálu: **Ostatní**

Surface treatment: **Ostatní**

Outer pipe diameter: **58**

Inlay damping value:

Connection facility: **Vnitřní závit**

Lock facility: **Double screw**

Šířka: **20**

Permitted by NCP: **Ne**

VdS quality mark: **Ne**

ULC quality mark: **Ne**

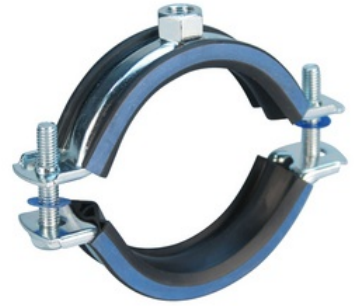
Suitable for steel tube: **Ano**

Suitable for copper tube: **Ano**

Vhodné pro litinové trubky: **Ano**

Suitable for pipe coil: **Ne**

Min. medium temperature (continuous): **-50**



---

### Příslušenství