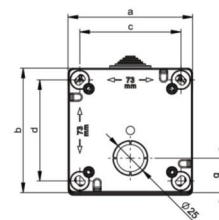
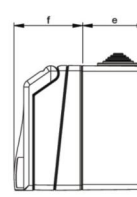
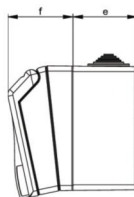
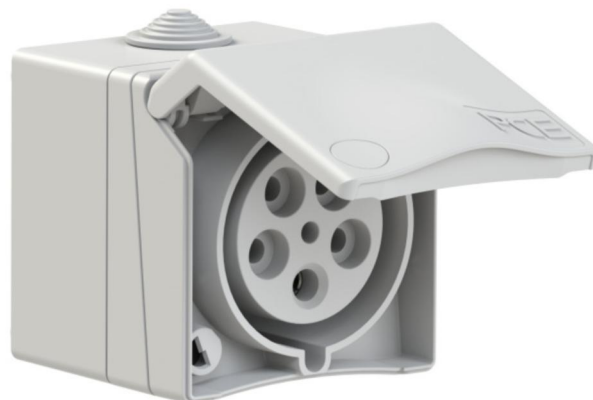


PCE data sheet

article#	875-6gv
article description	CEE-wall socket (surface outlet) Design 32A 5p 6h IP44 (grey)
description long	CEE-wall socket (surface outlet) Design 32A 5p 6h IP44 (grey) housing material: PC/ABS rated current: 32A number of poles: 5 (3P+N+PE) clock-position: 6h rated voltage/frequency: 200/346V~ - 240/415V~ / 50+60Hz contacts: brass nickel plated connection technology: screw terminals color: grey (similar to RAL 7035) wall-/surface-mounting hinged lid with inscription field (optional: key lock) IP protection class: IP44
GTIN (EAN)	9003399677557
country of origin	AT
customs number	85366990
net weight	0.367 kg
packaging quantity	6

ETIM 7.0	EC001318
Current supply	CEE 32 A
Number of poles	5
Voltage acc. EN 60309-2	400 V (50+60 Hz) red
Clock hour position	6 h
Identification colour	Red
Construction type	Wall mounted socket
Configuration	Cover with text label
Colour	Grey
RAL-number	7035
Contact material	CuZn
Surface finish contacts	Nickel-plated

wire flexible	2,5-6 mm ²
wire solid	2,5-10 mm ²
contact screws	110 Ncm
dismantling length	50 mm
stripping length	12-14 mm


www.manufacturer-safety.info