



Elios

design
René Šulc



Typ
závěsné svítidlo

Stínítko
akrylátové sklo

Kovové části
hliník lakovaný – RAL 9016 (.41), RAL 3004 (.42), RAL 7023 (.43),
RAL 5000 (.44) nebo RAL 9005 (.45)

Závěs
transparentní kabel nebo lankový s transparentním kabelem

Type
luminaire suspendu

Abat-jour
verre acrylique

Éléments métalliques
aluminium lacké - RAL 9016 (.41), RAL 3004 (.42), RAL 7023 (.43),
RAL 5000 (.44) ou RAL 9005 (.45)

Suspension
câble transparent ou câbles d'acier avec câble transparent

Type
suspension lamp

Lampshade
acrylic glass

Metal parts
painted aluminium – RAL 9016 (.41), RAL 3004 (.42), RAL 7023 (.43),
RAL 5000 (.44) or RAL 9005 (.45)

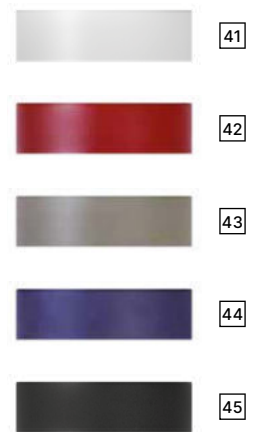
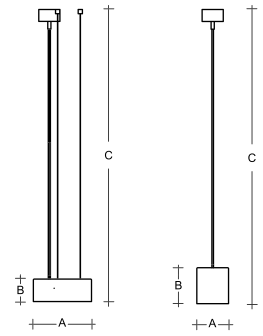
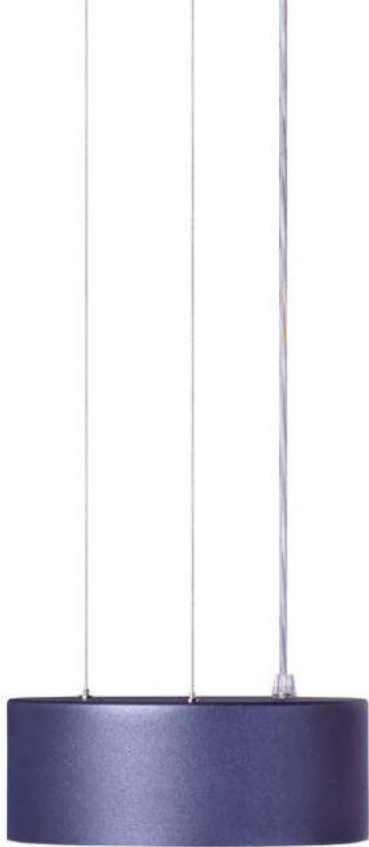
Pendant
transparent cable or wire suspension with transparent cable

Typ
Pendelleuchte

Lampenschirm
Acrylglas

Metallteile
Aluminium lackiert – RAL 9016 (.41), RAL 3004 (.42), RAL 7023 (.43),
RAL 5000 (.44) oder RAL 9005 (.45)

Federung
transparentes Kabel oder Seilaufhängung mit transparentem Kabel



PA

Type			A	B	C							
ZK.11.E120.XY	E27	1 x 60 (46) W	120	135	1500	-	-	-	-	-	R*	500

PA

Type	W	K	lm	A	B	C							
ZK.K1.E120.XY	9,6	3000	1237 / 1001	120	135	1500	M	N*	-	P*	Q*	R*	1100
ZK.K2.E120.XY	9,6	4000	1295 / 1047	120	135	1500	M	N*	-	P*	Q*	R*	1100
ZK.K3.E120.XY	6,7	3000	899 / 727	120	135	1500	M	N*	-	P*	Q*	R*	1100
ZK.K4.E120.XY	6,7	4000	942 / 762	120	135	1500	M	N*	-	P*	Q*	R*	1100
ZK3.K1.E220.XY	18,2	3000	2378 / 1922	220	85	1500	M	N*	-	P*	Q*	-	1700
ZK3.K2.E220.XY	18,2	4000	2491 / 2013	220	85	1500	M	N*	-	P*	Q*	-	1700
ZK3.K3.E220.XY	12,5	3000	1691 / 1366	220	85	1500	M	N*	-	P*	Q*	-	1700
ZK3.K4.E220.XY	12,5	4000	1771 / 1431	220	85	1500	M	N*	-	P*	Q*	-	1700

X - 41 42 43 44 45

Y - M N P Q R (bez / no / ohne Y = standard)

Přehled materiálů a vzorník barev RAL

overview of materials and RAL colour sampler
aperçu des matériaux et nuancier RAL
Materialübersicht und RAL-Farbenmuster

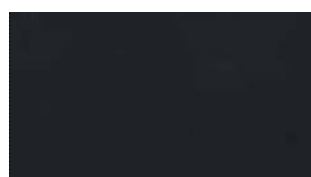
lesk / gloss / brillant / Glanz



31 RAL 9003



32 RAL 3022



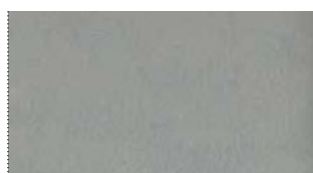
33 RAL 7021



34 RAL 6034



35 RAL 1018



36 RAL 9006



37 RAL 7023



38 RAL 5009



39 RAL 9005



71 RAL Gold

struktura / texture / structure / Struktur



41 RAL 9016



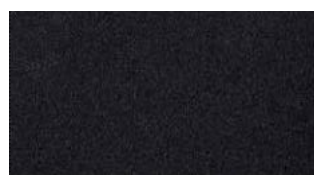
42 RAL 3004



43 RAL 7023



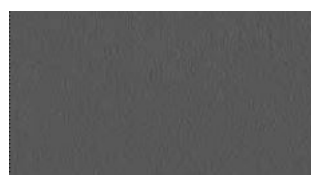
44 RAL 5000



45 RAL 9005



46 RAL 9006

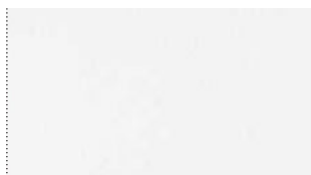


47 RAL 7012

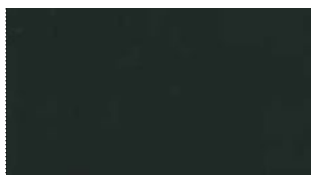


72 RAL Copper

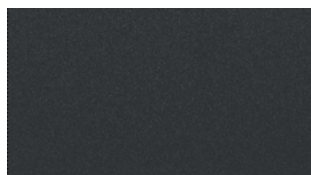
mat / matt / mat / Matt



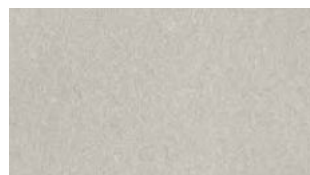
60 RAL 9003



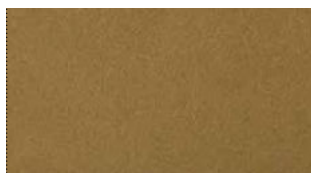
61 RAL 9005



62 RAL 7016



70 Argento Dorato



73 RAL Bronze



74 RAL Brass



75 RAL 3012



76 RAL 6011

80

chrom lesk / chrome gloss / chrome brillant / Chrom Glanz

81

nikl lesk / nickel gloss / nickel brillant / Nickel Glanz

83

nerez broušený / brushed stainless steel / inox taillé / Geschliffener Edelstahl

84

mosaz lesk / brass gloss / laiton brillant / Messing Glanz

85

nerez lesk / stainless steel gloss / inox brillant / Edelstahl Glanz

86

mosaz broušená / brass brushed / laiton taillé / Geschliffenes Messing

91

akrylglas bílý, propustnost světla světelně činné části 50 % / acrylic glass white, light transmittance of the optically active part 50 % / verre acrylique blanc, transmission de la lumière dans la partie active 50 % / Acrylglas weiß, Lichtdurchlässigkeit des lichtaktiven Teils 50 %

92

akrylglas bílý, propustnost světla 9 % / acrylic glass white, light transmittance 9 % / verre acrylique blanc, transmission de la lumière 9 % / Acrylglas weiß, Lichtdurchlässigkeit 9 %

93

akrylglas černý, propustnost světla 0 % / acrylic glass black, light transmittance 0 % / verre acrylique noir, transmission de la lumière 0 % / Acrylglas schwarz, Lichtdurchlässigkeit 0 %