



# Retro ZT



**Typ**  
závěsné svítidlo

**Stínítko**  
bílé ručně foukané trojvrstvé sklo opál mat

**Kovové části**  
ocelový plech lakovaný RAL 9016 (.41), RAL 9005 (.45), RAL Měď (.72), RAL Bronz (.73) nebo RAL Mosaz (.74)

**Závěs**  
tyčový

**Type**  
luminaire suspendu

**Abat-jour**  
verre blanc, soufflé de manière artisanale, à trois couches, satin opale

**Les pièces métalliques**  
acier laqué RAL 9016 (.41), RAL 9005 (.45), RAL Cuivre (.72), RAL Bronze (.73) ou RAL Laiton (.74)

**Suspension**  
tube

**Type**  
suspension lamp

**Lampshade**  
white, hand-blown, three-layered glass, satin opal matt

**Metal parts**  
painted steel plate RAL 9016 (.41), RAL 9005 (.45), RAL Copper (.72), RAL Bronze (.73) or RAL Brass (.74)

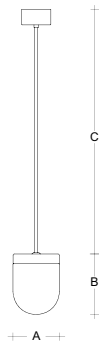
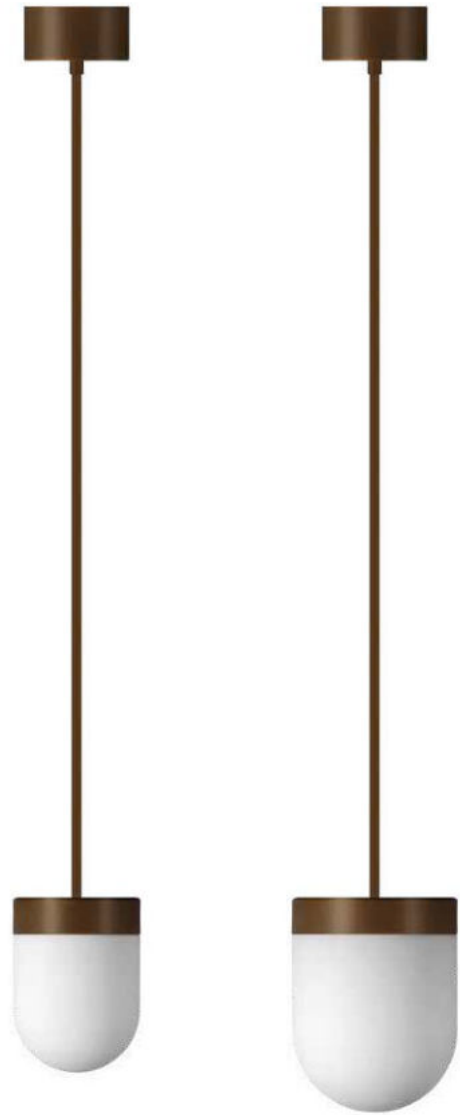
**Pendant**  
rod

**Type**  
Pendelleuchte

**Lampenschirm**  
weißes, mundgeblasenes, dreischichtiges Opalglas seidenmatt

**Metallteile**  
lackiertes Stahlblech RAL 9016 (.41), RAL 9005 (.45), RAL Kupfer (.72), RAL Bronze (.73) oder RAL Messing (.74)

**Federung**  
Stahlrohr



41



45



72



73



74



Type			A	B	C							
ZT.L1.R14.XY	E27	1 × 60 (46) W	140	195	1000	-	-	-	-	-	R*	2200
ZT.L1.R19.XY	E27	1 × 100 (77) W	190	250	1000	-	-	-	-	-	R*	3000



Type	W	K	lm	A	B	C							
ZT.L1.R14.XY	8,4	3000	874 / 619	140	195	1000	M*	N*	-	P*	Q*	R*	2200
ZT.L2.R14.XY	8,4	4000	935 / 662	140	195	1000	M*	N*	-	P*	Q*	R*	2200
ZT.L1.R19.XY	13,3	3000	1677 / 1188	190	250	1000	M*	N*	-	P*	Q*	R*	3000
ZT.L2.R19.XY	13,3	4000	1762 / 1248	190	250	1000	M*	N*	-	P*	Q*	R*	3000

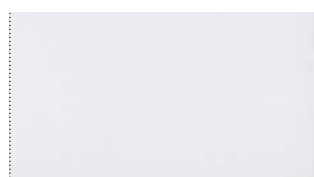
X - 41 45 72 73 74

Y - M N P Q R (bez / no / ohne Y = standard)

# Přehled materiálů a vzorník barev RAL

overview of materials and RAL colour sampler  
aperçu des matériaux et nuancier RAL  
Materialübersicht und RAL-Farbenmuster

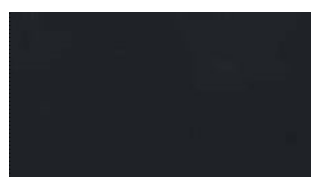
## lesk / gloss / brillant / Glanz



31 RAL 9003



32 RAL 3022



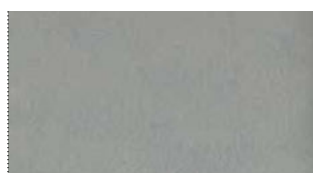
33 RAL 7021



34 RAL 6034



35 RAL 1018



36 RAL 9006



37 RAL 7023



38 RAL 5009



39 RAL 9005

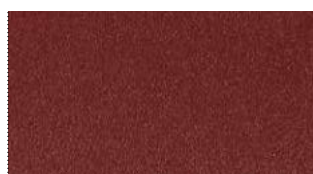


71 RAL Gold

## struktura / texture / structure / Struktur



41 RAL 9016



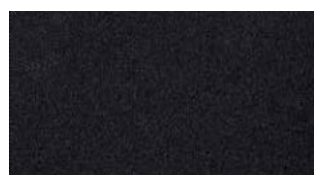
42 RAL 3004



43 RAL 7023



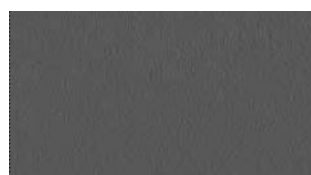
44 RAL 5000



45 RAL 9005



46 RAL 9006

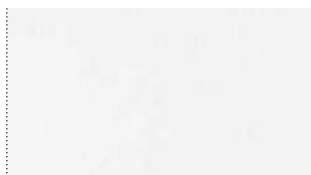


47 RAL 7012

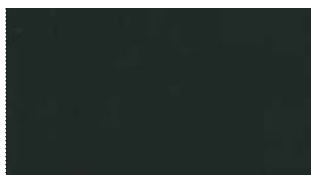


72 RAL Copper

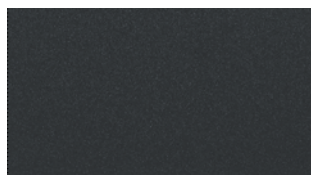
## mat / matt / mat / Matt



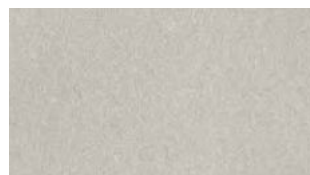
60 RAL 9003



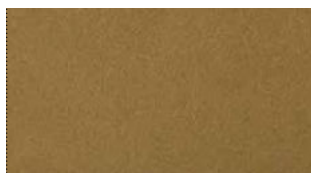
61 RAL 9005



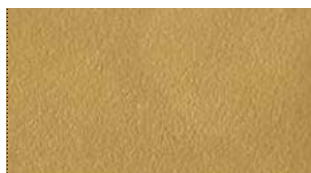
62 RAL 7016



70 Argento Dorato



73 RAL Bronze



74 RAL Brass



75 RAL 3012



76 RAL 6011

80

chrom lesk / chrome gloss / chrome brillant / Chrom Glanz

81

nikl lesk / nickel gloss / nickel brillant / Nickel Glanz

83

nerez broušený / brushed stainless steel / inox taillé / Geschliffener Edelstahl

84

mosaz lesk / brass gloss / laiton brillant / Messing Glanz

85

nerez lesk / stainless steel gloss / inox brillant / Edelstahl Glanz

86

mosaz broušená / brass brushed / laiton taillé / Geschliffenes Messing

91

akrylglas bílý, propustnost světla světelně činné části 50 % / acrylic glass white, light transmittance of the optically active part 50 % / verre acrylique blanc, transmission de la lumière dans la partie active 50 % / Acrylglas weiß, Lichtdurchlässigkeit des lichtaktiven Teils 50 %

92

akrylglas bílý, propustnost světla 9 % / acrylic glass white, light transmittance 9 % / verre acrylique blanc, transmission de la lumière 9 % / Acrylglas weiß, Lichtdurchlässigkeit 9 %

93

akrylglas černý, propustnost světla 0 % / acrylic glass black, light transmittance 0 % / verre acrylique noir, transmission de la lumière 0 % / Acrylglas schwarz, Lichtdurchlässigkeit 0 %