

Juno LED

design
René Šulc



Typ

závěsné svítidlo

Stínítko

akrylátové sklo

Kovové části

lakovaný hliník v různých barvách, (kombinace) RAL 9003 (.31), RAL 3022 (.32), RAL 7021 (.33), RAL 6034 (.34), RAL 1018 (.35)

Závěs

samonosný vodič bílé barvy X-01 nebo černé barvy X-02 až X-05 vyztužený ocelovým lankem

Type

luminaire suspendu

Abat-jour

verre acrylique

Les pièces métalliques

aluminium laqué de couleurs variées, (combinaison) RAL 9003 (.31), RAL 3022 (.32), RAL 7021 (.33), RAL 6034 (.34), RAL 1018 (.35)

Suspension

conducteur à part de couleur blanche X-01 ou noire X02-X05 renforcé par un câble en acier aux éléments

Type

suspension lamp

Lampshade

acrylic glass

Metal parts

painted aluminium in diverse colours, (combination) RAL 9003 (.31), RAL 3022 (.32), RAL 7021 (.33), RAL 6034 (.34), RAL 1018 (.35)

Pendant

self-supporting white X-01 or black X-02 to X-05 cable reinforced with a steel wire

Typ

Pendelleuchte

Lampenschirm

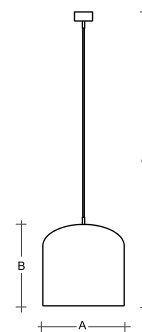
Acrylglas

Metallteile

weiß lackiertes Stahlbleckiertes Aluminium in verschiedenen Farbvarianten, (Kombination) RAL 9003 (.31), RAL 3022 (.32), RAL 7021 (.33), RAL 6034 (.34), RAL 1018 (.35)

Federung

selbsttragendes weißes X-01 oder schwarzes X02-X05 Kabel versteift mit Stahllitze



X-01



X-02



X-03



X-04



X-05



X-20



X-23



LED

PA

Type	W	K	lm	A	B	C	DALI 2	CORR	☺	☑	📶	📦	🔒
ZK.K1.J1.XY	9,6	3000	1237 / 980	150	150	2000	M	N*	-	P*	-	R*	1300
ZK.K2.J1.XY	9,6	4000	1295 / 1026	150	150	2000	M	N*	-	P*	-	R*	1300
ZK.K3.J1.XY	6,7	3000	899 / 712	150	150	2000	M	N*	-	P*	-	R*	1300
ZK.K4.J1.XY	6,7	4000	942 / 747	150	150	2000	M	N*	-	P*	-	R*	1300
ZK.K1.J2.XY	18,1	3000	2378 / 1880	280	280	2000	M	N*	-	P*	Q*	R*	2700
ZK.K2.J2.XY	18,1	4000	2491 / 1968	280	280	2000	M	N*	-	P*	Q*	R*	2700
ZK.K3.J2.XY	12,5	3000	1691 / 1336	280	280	2000	M	N*	-	P*	Q*	R*	2700
ZK.K4.J2.XY	12,5	4000	1771 / 1399	280	280	2000	M	N*	-	P*	Q*	R*	2700
ZK.K1.J3.XY	36	3000	4448 / 3517	360	360	2000	M	N*	-	P*	Q*	-	4400
ZK.K2.J3.XY	36	4000	4659 / 3684	360	360	2000	M	N*	-	P*	Q*	-	4400
ZK.K3.J3.XY	23,3	3000	3052 / 2413	360	360	2000	M	N*	-	P*	Q*	-	4400
ZK.K4.J3.XY	23,3	4000	3197 / 2528	360	360	2000	M	N*	-	P*	Q*	-	4400

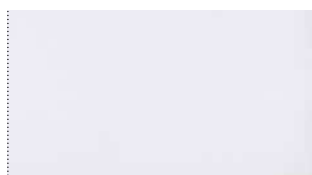
X - [01] [02] [03] [04] [05] [20] [23]

Y - [M] [N] [P] [Q] [R] (bez / no / ohne Y = standard)

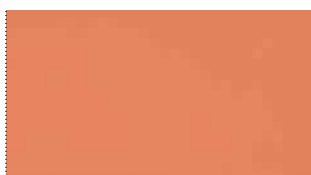
Přehled materiálů a vzorník barev RAL

overview of materials and RAL colour sampler
aperçu des matériaux et nuancier RAL
Materialübersicht und RAL-Farbenmuster

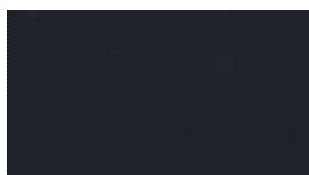
lesk / gloss / brillant / Glanz



31 RAL 9003



32 RAL 3022



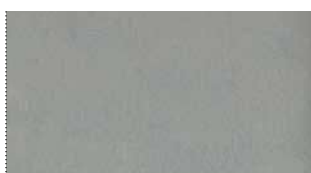
33 RAL 7021



34 RAL 6034



35 RAL 1018



36 RAL 9006



37 RAL 7023



38 RAL 5009



39 RAL 9005



71 RAL Gold

struktura / texture / structure / Struktur



41 RAL 9016



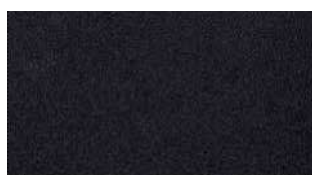
42 RAL 3004



43 RAL 7023



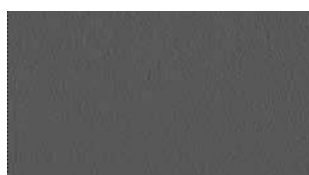
44 RAL 5000



45 RAL 9005



46 RAL 9006

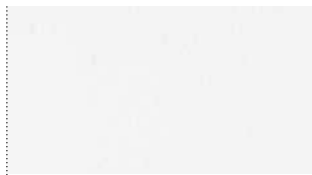


47 RAL 7012

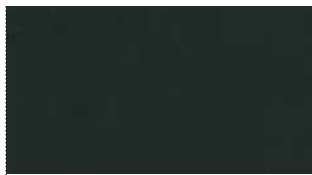


72 RAL Copper

mat / matt / mat / Matt



60 RAL 9003



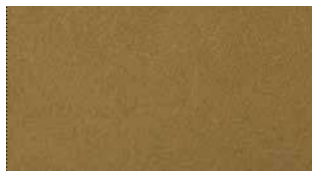
61 RAL 9005



62 RAL 7016



70 Argento Dorato



73 RAL Bronze



74 RAL Brass



75 RAL 3012



76 RAL 6011

80

chrom lesk / chrome gloss / chrome brillant / Chrom Glanz

81

nikl lesk / nickel gloss / nickel brillant / Nickel Glanz

83

nerez broušený / brushed stainless steel / inox taillé / Geschliffener Edelstahl

84

mosaz lesk / brass gloss / laiton brillant / Messing Glanz

85

nerez lesk / stainless steel gloss / inox brillant / Edelstahl Glanz

86

mosaz broušená / brass brushed / laiton taillé / Geschliffenes Messing

91

akrylglas bílý, propustnost světla světelně činné části 50 % / acrylic glass white, light transmittance of the optically active part 50 % / verre acrylique blanc, transmission de la lumière dans la partie active 50 % / Acrylglas weiß, Lichtdurchlässigkeit des lichtaktiven Teils 50 %

92

akrylglas bílý, propustnost světla 9 % / acrylic glass white, light transmittance 9 % / verre acrylique blanc, transmission de la lumière 9 % / Acrylglas weiß, Lichtdurchlässigkeit 9 %

93

akrylglas černý, propustnost světla 0 % / acrylic glass black, light transmittance 0 % / verre acrylique noir, transmission de la lumière 0 % / Acrylglas schwarz, Lichtdurchlässigkeit 0 %